

Ardana M 270

Welcome to light, airy, open plan living! As you explore this stunning home you'll find a beautifully integrated kitchen, dining and living space at its heart, flowing out to a huge alfresco entertaining area. Turning your attention to the bedrooms, you'll appreciate the privacy of the large master bedroom suite, positioned away from the children's rooms. There's also a separate media room.

FRONTAGE 16m

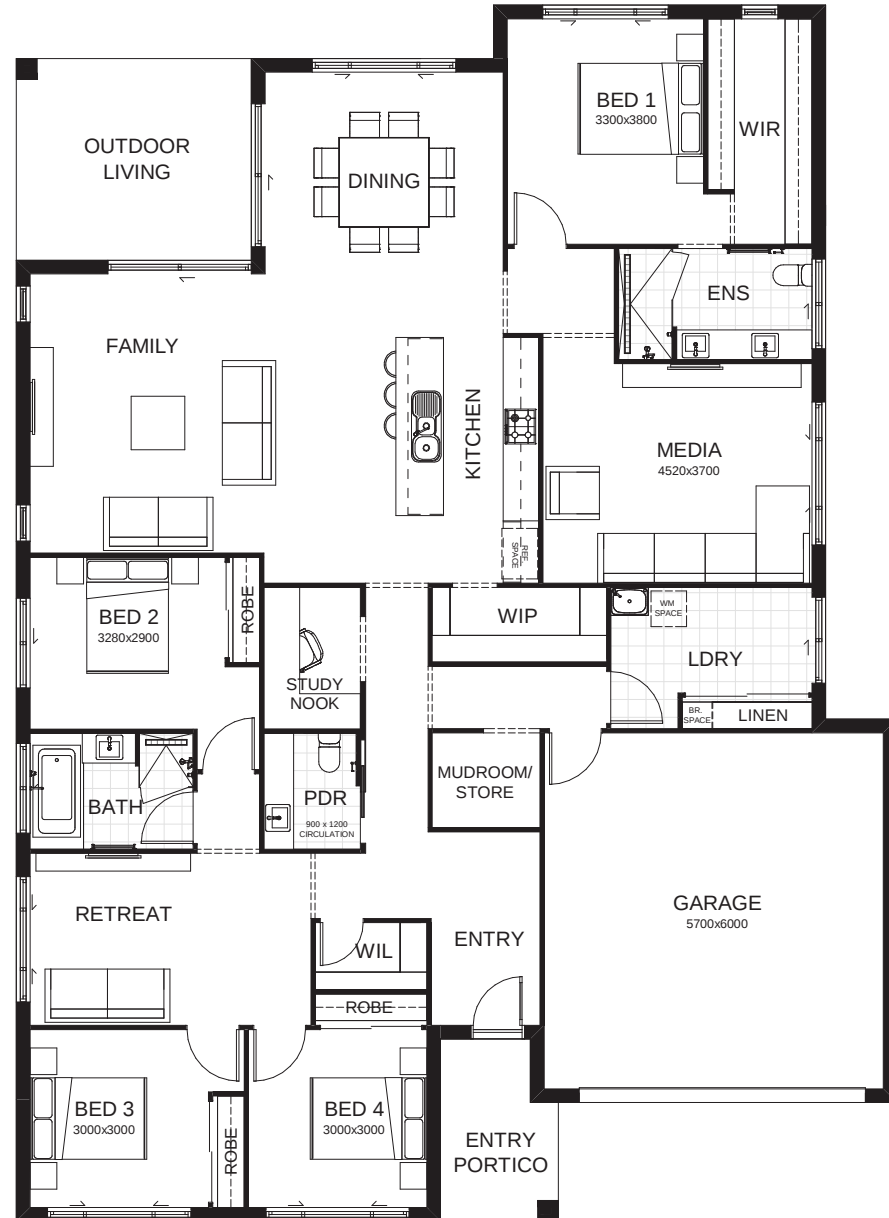
TOTAL FLOOR AREA 270.2m²

EXTERNAL DIMENSIONS 20.49m x 14.8m

4 3 2 1 2



Your dream home starts here.



This document is produced for marketing and illustration purposes and should only be used as a guide. Please note all plans are not to scale, and all images, materials used and inclusions are indicative only. © Copyright of Bold Living. boldliving.com.au

BOLD LIVING
create your dream