


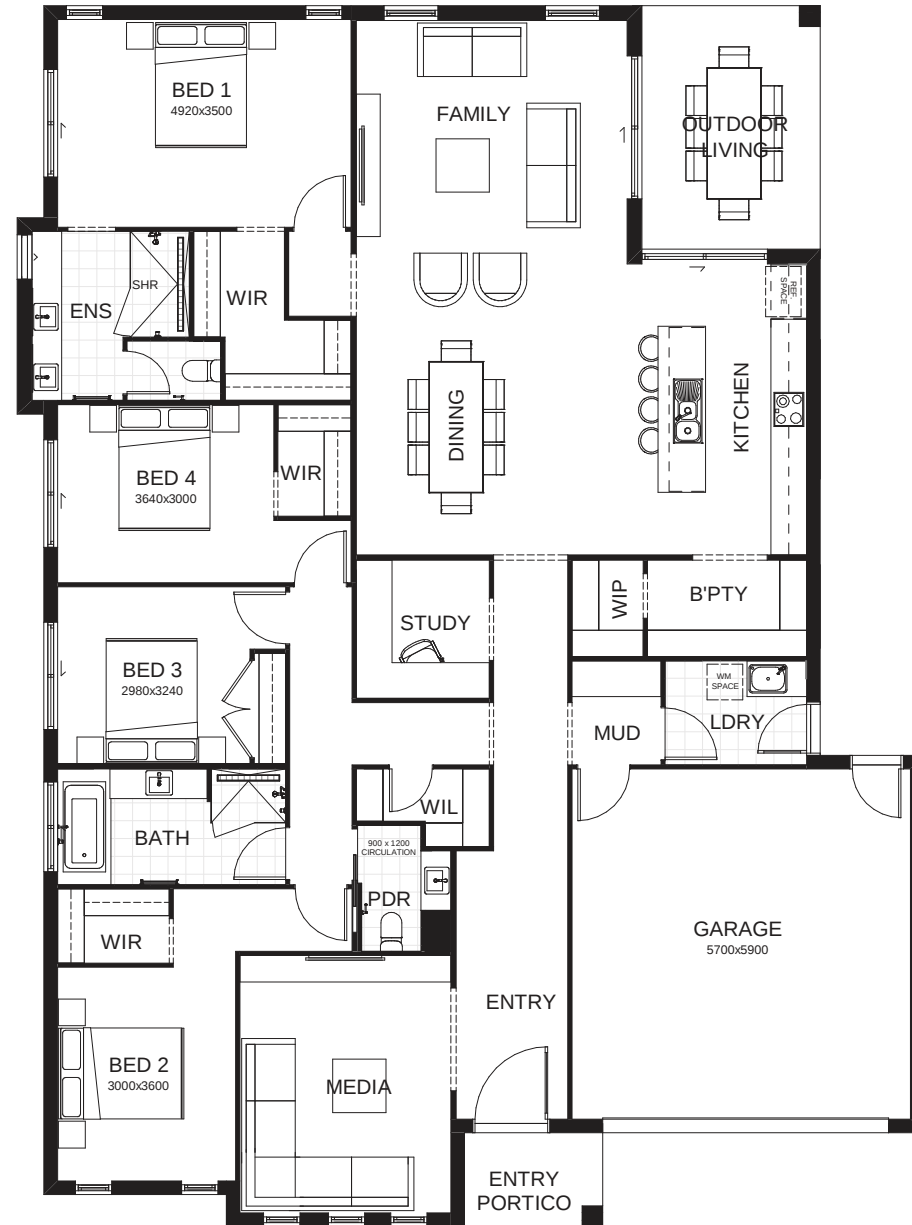


# Sienna 274

A contemporary family home designed with style and functionality in mind. Featuring four bedrooms, including a private master suite with walk-in robe and ensuite, this design offers both comfort and space. The open-plan kitchen, dining, and family areas flow seamlessly to the outdoor living zone, creating the perfect hub for entertaining. A media room, study, mudroom, and butler's pantry add flexibility and convenience, while thoughtful storage solutions throughout make everyday living simple. Sienna is a blend of modern design with family-focused practicality.

	<b>FRONTAGE</b>	16m
	<b>TOTAL FLOOR AREA</b>	274m <sup>2</sup>
	<b>EXTERNAL DIMENSIONS</b>	20.57m x 15.27m



This document is produced for marketing and illustration purposes and should only be used as a guide. Please note all plans are not to scale, and all images, materials used and inclusions are indicative only. © Copyright of Bold Living. [boldliving.com.au](http://boldliving.com.au)

**BOLD LIVING**  
*create your dream*

Your dream home starts here.