

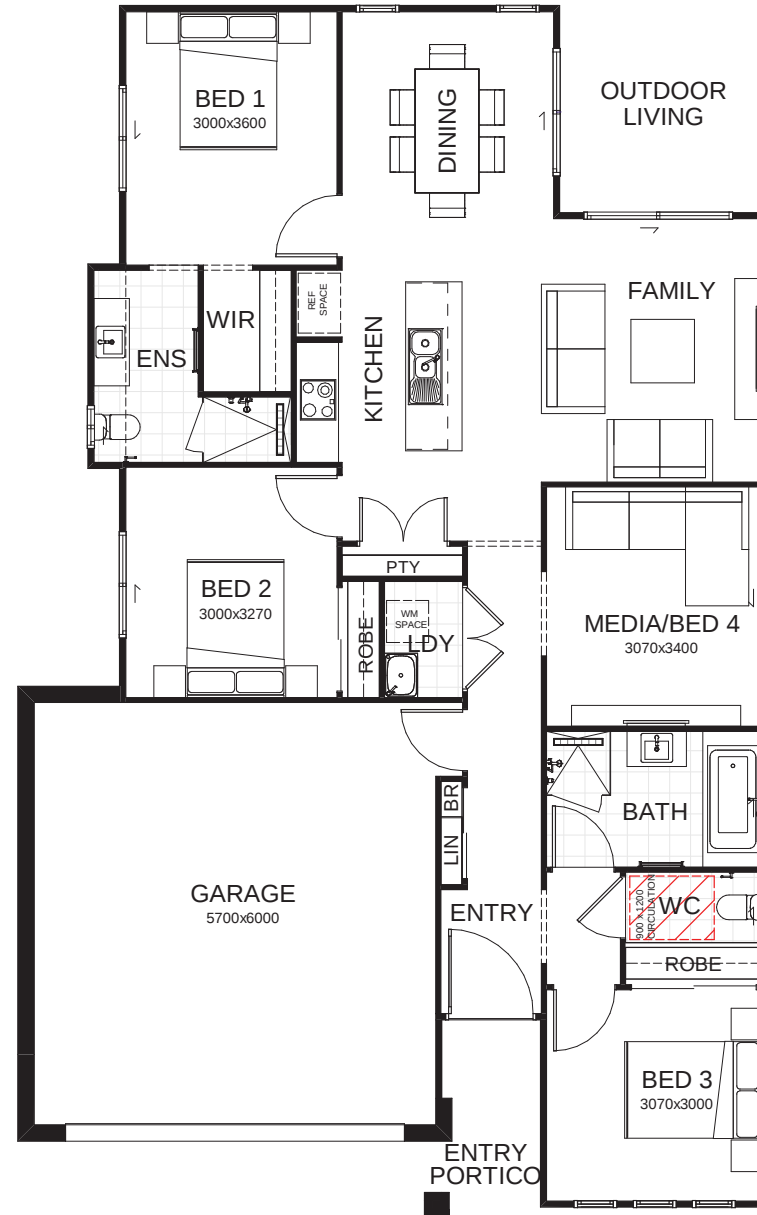
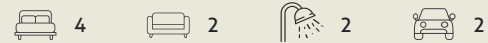
# Carlton 164

Cleverly designed so everything you're looking for is all on one level, this home has the integrated open kitchen, dining and family room at its heart. There's a well-placed outdoor living space, a convenient study nook and another generous space that can function as a media room or a fourth bedroom. Contact us today to customise the Carlton home to you!

FRONTAGE 12.5m

TOTAL FLOOR AREA 164.1m<sup>2</sup>

EXTERNAL DIMENSIONS 17.19m x 10.64m



Your dream home starts here.

This document is produced for marketing and illustration purposes and should only be used as a guide. Please note all plans are not to scale, and all images, materials used and inclusions are indicative only. © Copyright of Bold Living. [boldliving.com.au](http://boldliving.com.au)

**BOLD LIVING**  
*create your dream*