

Newport 28

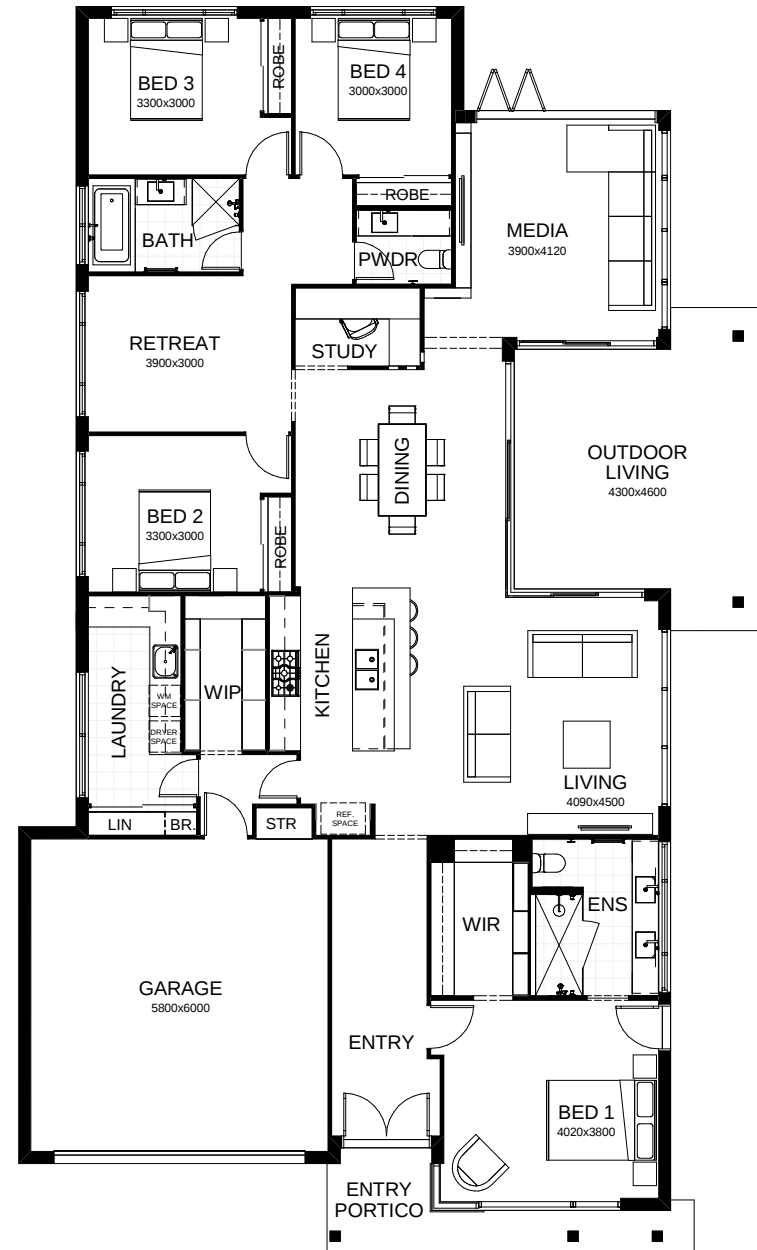
A superbly spacious interpretation of family living all on one level, this floor plan has it all. Note the master suite with walk-in robe, and the three children's rooms grouped around a separate retreat. There's also a media room and private study. As you move through, you'll come to the open plan living, kitchen and dining space, connecting seamlessly with the expansive alfresco living area.

FRONTAGE 12.5m

TOTAL FLOOR AREA 270.9m²

EXTERNAL DIMENSIONS 23.7m x 12.5m

4 3 2.5 1 2



This document is produced for marketing and illustration purposes and should only be used as a guide. Please note all plans are not to scale, and all images, materials used and inclusions are indicative only. © Copyright of Bold Living. boldliving.com.au

BOLD LIVING
create your dream

ERROR fo
Invalid do

Your dream home starts here.