

Ashton 255

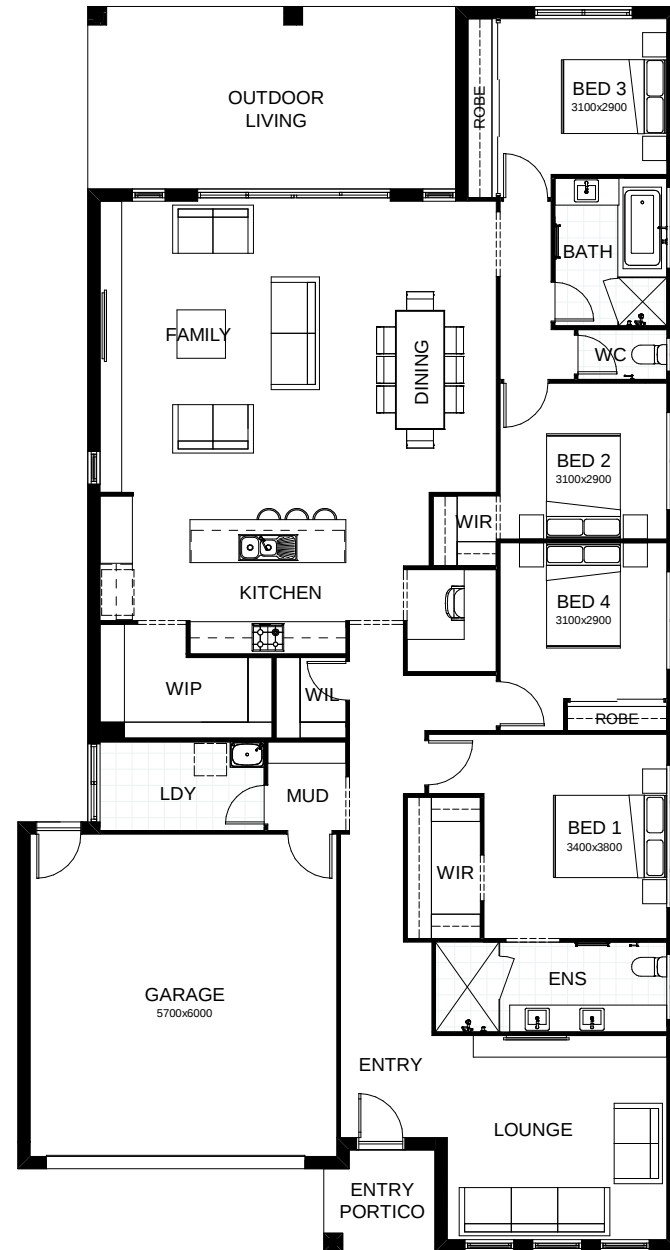
The Ashton delivers a stunning 4 bedroom design that ticks all the boxes! You're spoilt with the spacious master suite complete with an ensuite and walk-in robe, and the addition of a private second living space! At the heart of the home is an open plan family, dining and kitchen space, all of which opens seamlessly onto an outdoor entertaining area.

FRONTAGE 14m

TOTAL FLOOR AREA 255.4m²

EXTERNAL DIMENSIONS 23.2m x 12.3m

4 beds, 2 sofas, 2 showers, 1 TV, 2 cars



This document is produced for marketing and illustration purposes and should only be used as a guide. Please note all plans are not to scale, and all images, materials used and inclusions are indicative only. © Copyright of Bold Living. boldliving.com.au

BOLD LIVING
create your dream

Your dream home starts here.