



Sophia 20

Everything essential is included in this smart single level design. From the multi-purpose room – perfect for relaxing, to the open plan family, dining and kitchen space at the heart of the home connecting directly to the spacious alfresco area. Contact us today to customise the Sophia home to you!

 **FRONTAGE** 12m

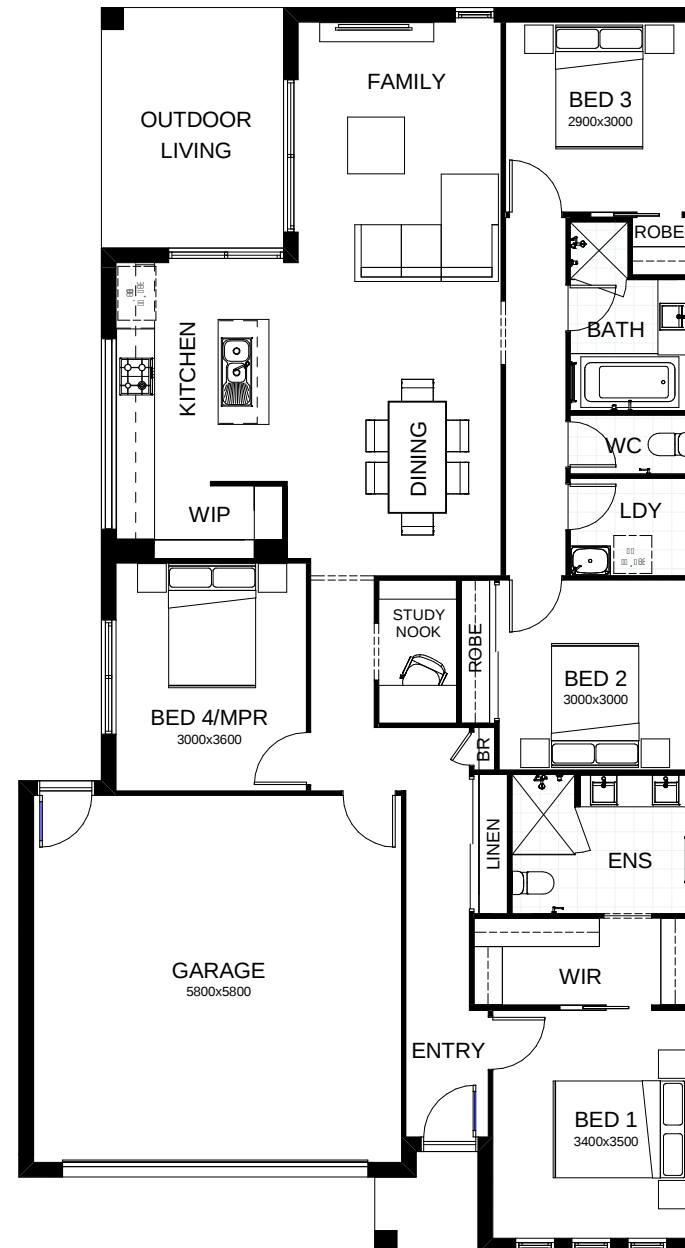
 **TOTAL FLOOR AREA** 189.9m²

 **EXTERNAL DIMENSIONS** 19.68m x 10.8m

 4  1  2  1  2



Your **dream home** starts here.



This document is produced for marketing and illustration purposes and should only be used as a guide. Please note all plans are not to scale, and all images, materials used and inclusions are indicative only. © Copyright of Bold Living.
boldliving.com.au

BOLD LIVING
create your dream