


Ardana 231

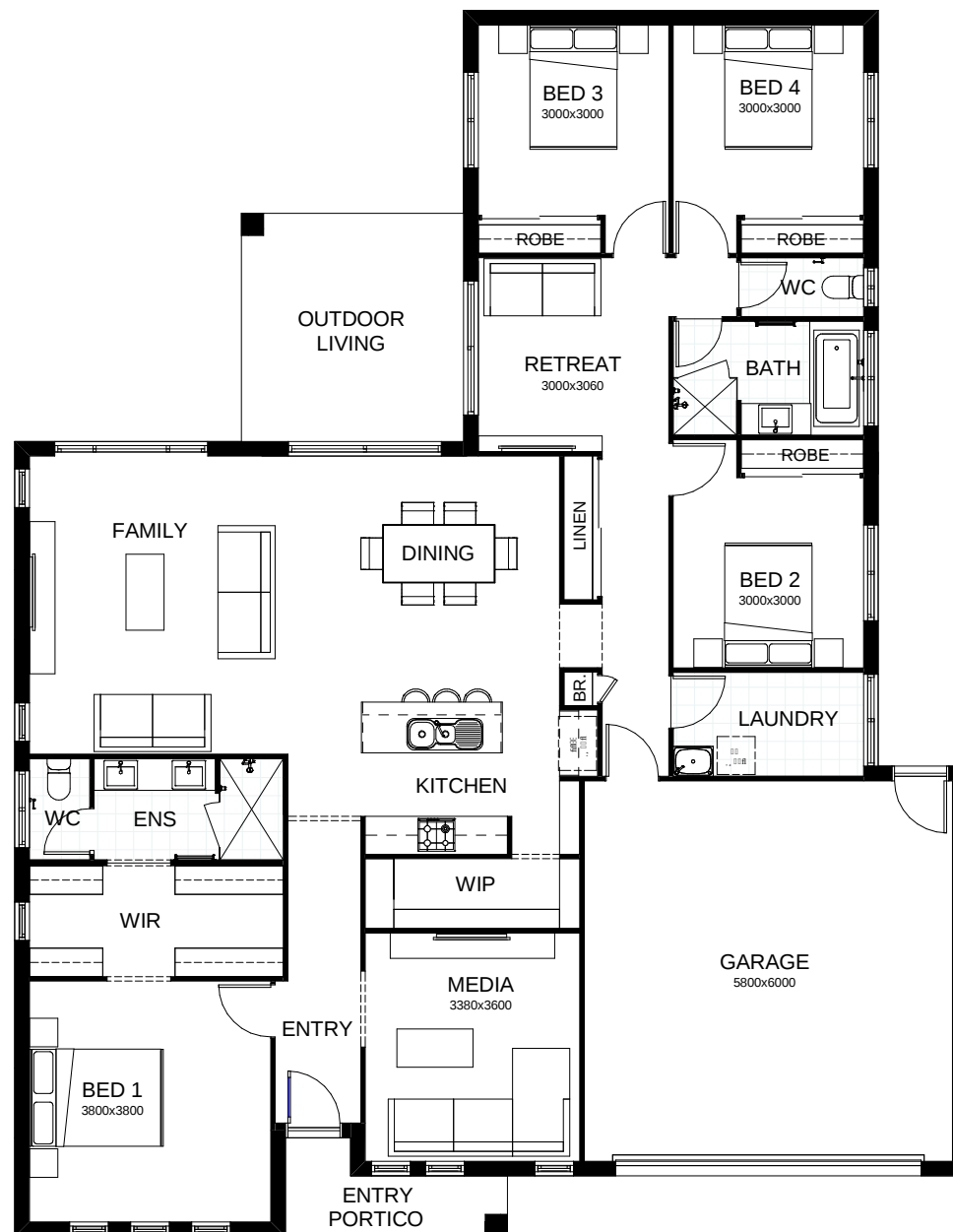
Light, airy, open plan living all on one level! Clever design means this stunning home will suit everyone in your family. A large alfresco space is the perfect place to entertain and the well-designed kitchen makes it easy. There's a separate media room, and parents can retreat to the privacy of their large master bedroom suite, located well away from the children's rooms. Contact us today to customise the Ardana home to you!

 **FRONTAGE** 17m

 **TOTAL FLOOR AREA** 231m²

 **EXTERNAL DIMENSIONS** 19.34m x 15m

 4  3  2  2



This document is produced for marketing and illustration purposes and should only be used as a guide. Please note all plans are not to scale, and all images, materials used and inclusions are indicative only. © Copyright of Bold Living.
boldliving.com.au

BOLD LIVING
create your dream

Your **dream home** starts here.

Privacy - Terms