

# Grayson 377

Wide and handsome, the Grayson designs in our Sanctuary collection maximise light and airy living. There are four bedrooms including a spacious master suite, media room, study and retreat area the kids can make their own. The open kitchen, living and dining space, right beside the huge outdoor living area, make it perfect for big family gatherings or entertaining friends. Contact us today to customise the Grayson home to you!

**FRONTAGE** 41.5m

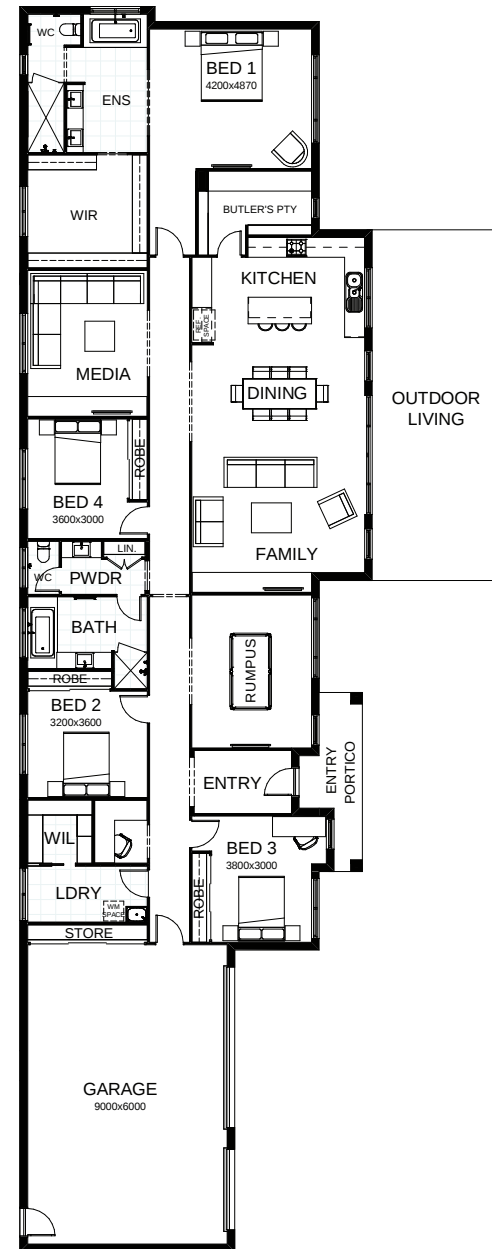
**TOTAL FLOOR AREA** 377.6m<sup>2</sup>

**EXTERNAL DIMENSIONS** 14.6m x 37.43m

4 3 2.5 1 3



Your dream home starts here.



This document is produced for marketing and illustration purposes and should only be used as a guide. Please note all plans are not to scale, and all images, materials used and inclusions are indicative only. © Copyright of Bold Living. [boldliving.com.au](http://boldliving.com.au)

**BOLD LIVING**  
create your dream