

Carlton 190

Cleverly designed so everything you're looking for is all on one level, this home has the integrated open kitchen, dining and family room at its heart. There's a well-placed outdoor living space, a convenient study nook and another generous space that can function as a media room or a fourth bedroom. Contact us today to customise the Carlton home to you!

FRONTAGE 12.5m

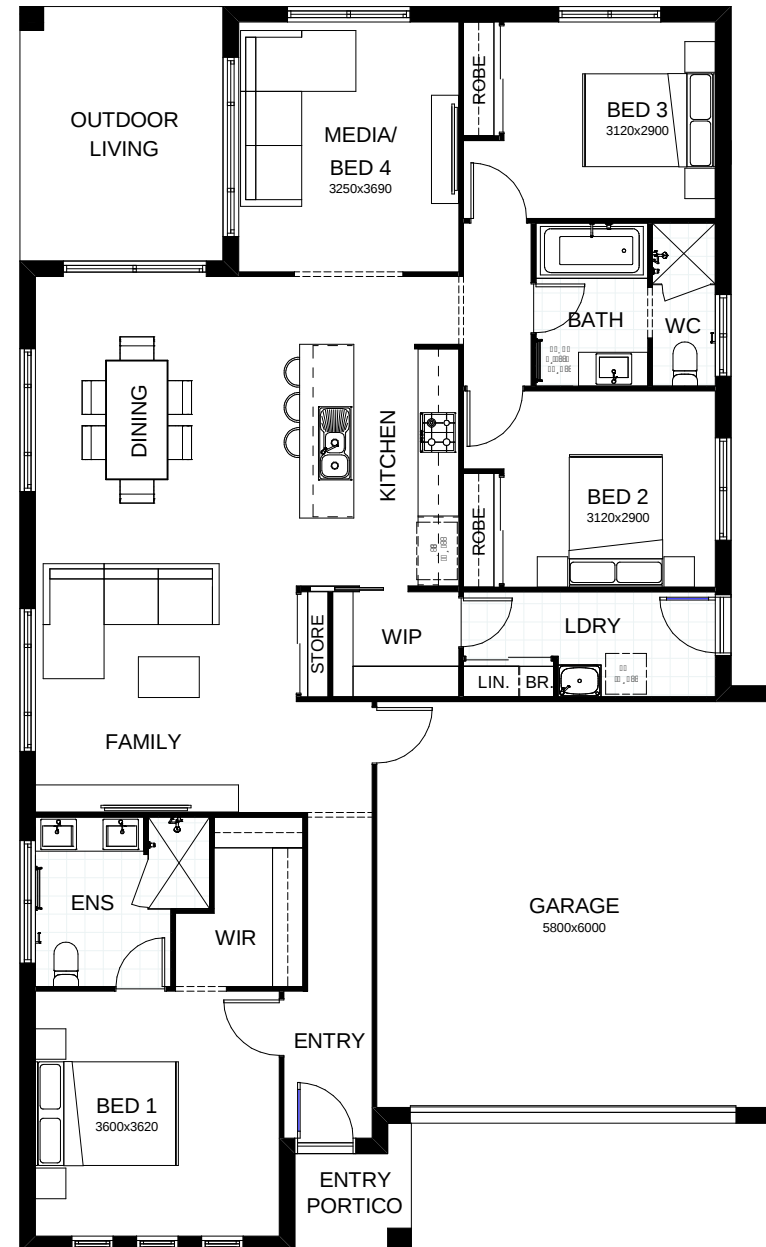
TOTAL FLOOR AREA 189.4m²

EXTERNAL DIMENSIONS 18.4m x 11.3m

4 2 2 2



Your **dream home** starts here.



This document is produced for marketing and illustration purposes and should only be used as a guide. Please note all plans are not to scale, and all images, materials used and inclusions are indicative only. © Copyright of Bold Living.
boldliving.com.au

BOLD LIVING
create your dream