

Falcon 204

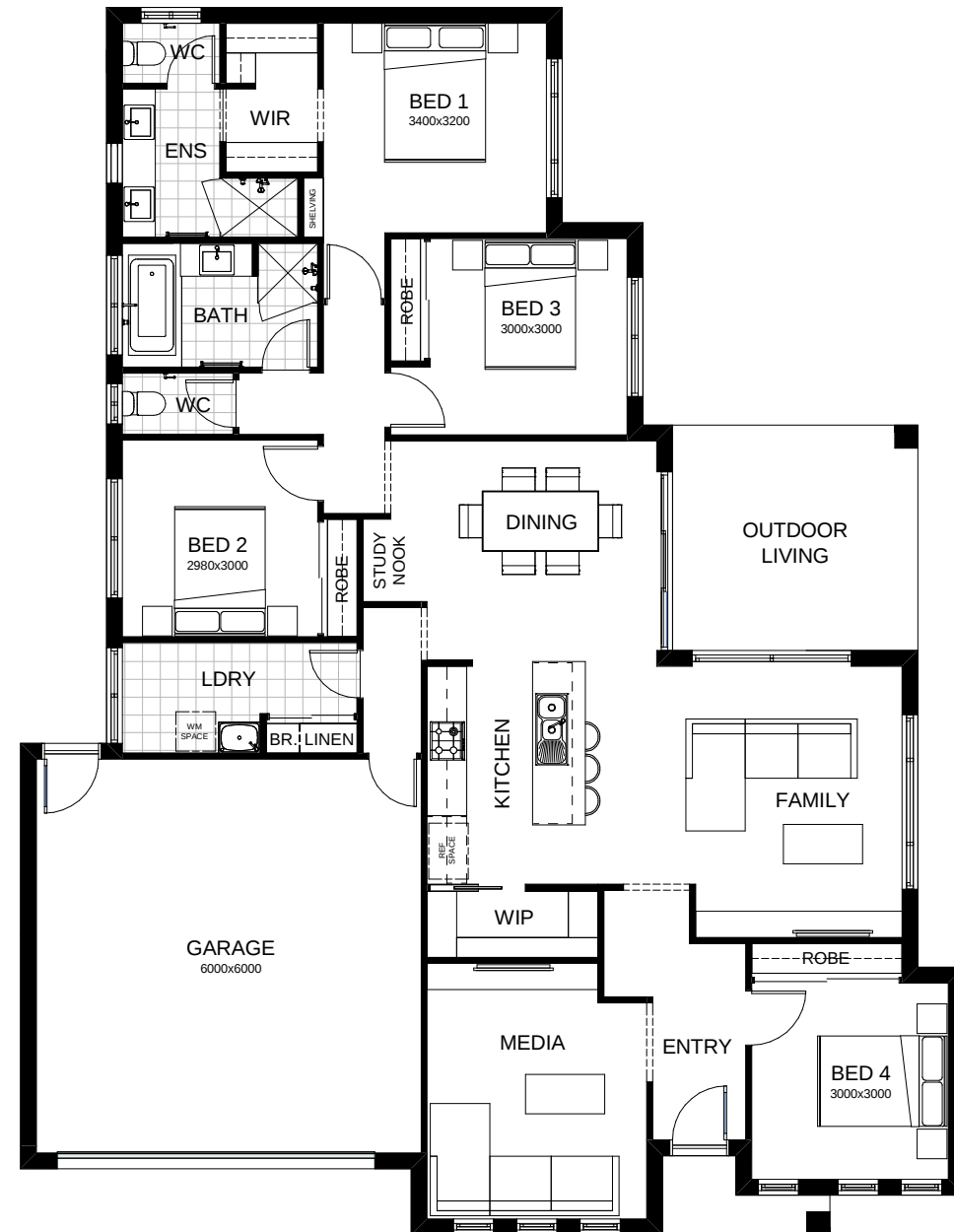
There's room for everyone in this four bedroom home. Open plan living allows for the kitchen, dining/living to flow onto the outdoor entertaining area. There's also a butler's pantry, separate media room and the parents' master suite includes an ensuite and large walk-in robe. Contact us today to customise the Falcon home to you!

FRONTAGE 16m

TOTAL FLOOR AREA 202.7m²

EXTERNAL DIMENSIONS 18.93m x 14.3m

4 2 2 1 2



This document is produced for marketing and illustration purposes and should only be used as a guide. Please note all plans are not to scale, and all images, materials used and inclusions are indicative only. © Copyright of Bold Living.
boldliving.com.au

BOLD LIVING
create your dream

Your dream home starts here.