

Newport 200

Family living is the focus in this cleverly-executed, spacious one level design. Features comprise four bedrooms, including a master suite with walk-in robe, separately zoned children's rooms and their own retreat area, plus a large media room and a study. The open plan living, kitchen and dining link directly with an inviting outdoor entertaining space. Contact us today to customise the Newport home to you!

FRONTAGE 12.5m

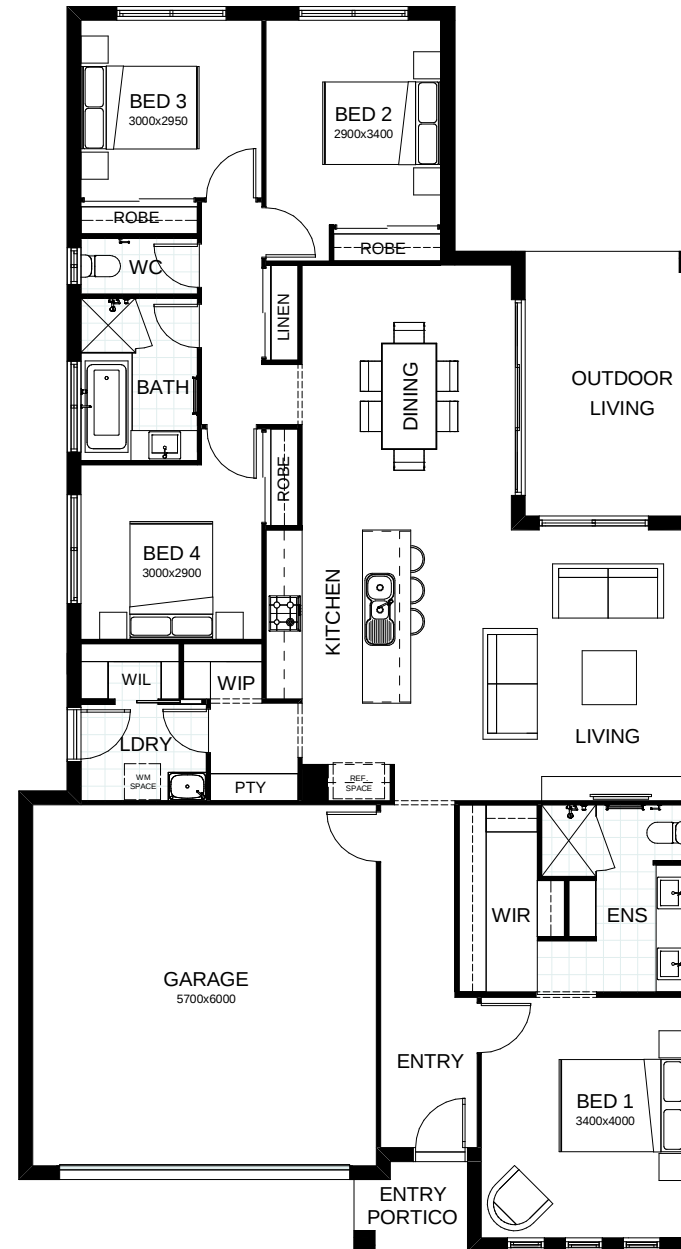
TOTAL FLOOR AREA 200.2m²

EXTERNAL DIMENSIONS 20.7m x 11.3m

4 1 2.5 2



Your dream home starts here.



This document is produced for marketing and illustration purposes and should only be used as a guide. Please note all plans are not to scale, and all images, materials used and inclusions are indicative only. © Copyright of Bold Living.
boldliving.com.au

BOLD LIVING
create your dream