




# Portofino 278

Another four bedroom home that is cleverly designed for families and entertaining. Featuring a seamless flow between kitchen, dining and alfresco, this design presents irresistible entertaining options! Including a butlers pantry and separate study, this home has everything! Contact us today to customise the Portofino home to you!

 **FRONTAGE** 16m

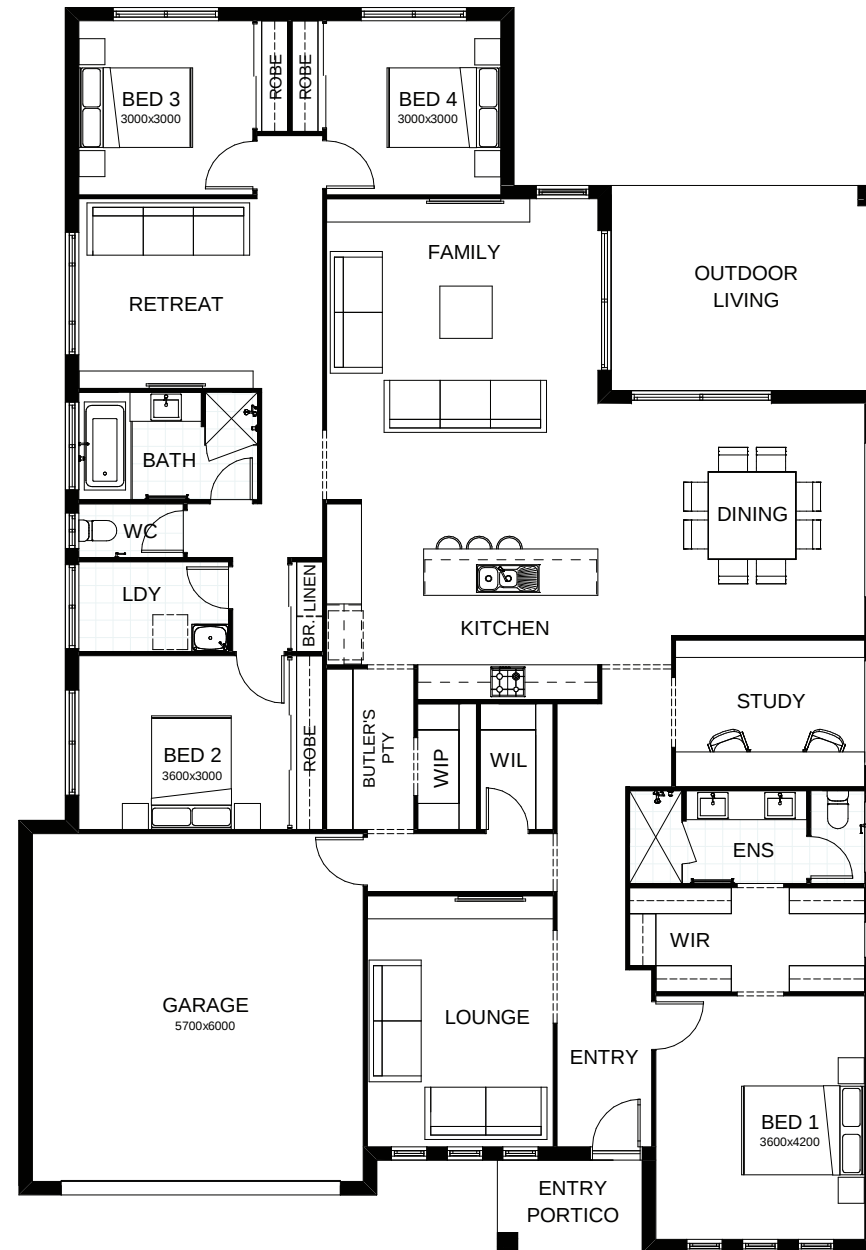
 **TOTAL FLOOR AREA** 278m<sup>2</sup>

 **EXTERNAL DIMENSIONS** 21.48m x 14.8m

 4  3  2  1  2



Your **dream home** starts here.



This document is produced for marketing and illustration purposes and should only be used as a guide. Please note all plans are not to scale, and all images, materials used and inclusions are indicative only. © Copyright of Bold Living.  
boldliving.com.au

**BOLD LIVING**  
*create your dream*