

Portofino 203

Another four bedroom home that is cleverly designed for families and entertaining. Featuring a seamless flow between kitchen, dining and alfresco, this design presents irresistible entertaining options! Including a butlers pantry and separate study, this home has everything! Contact us today to customise the Portofino home to you!

FRONTAGE 12.5m

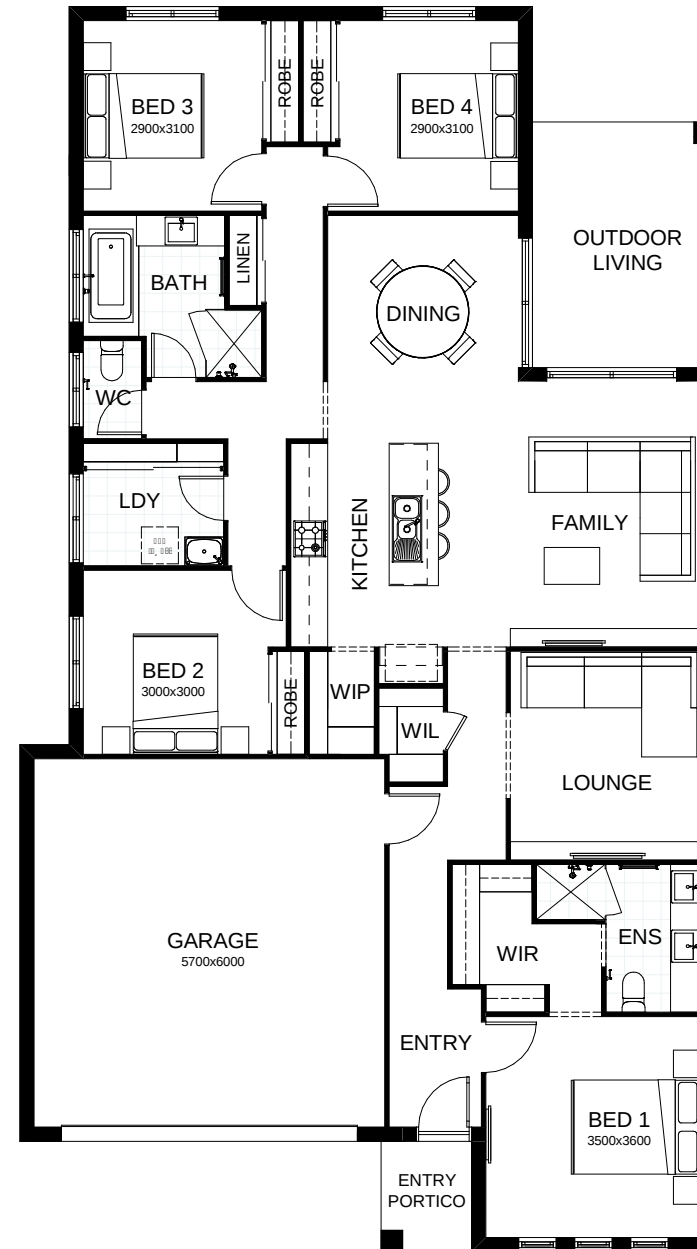
TOTAL FLOOR AREA 203.4m²

EXTERNAL DIMENSIONS 20.28m x 11.30m

4 2 2 2



Your dream home starts here.



This document is produced for marketing and illustration purposes and should only be used as a guide. Please note all plans are not to scale, and all images, materials used and inclusions are indicative only. © Copyright of Bold Living.
boldliving.com.au

BOLD LIVING
create your dream