



# Samson 300

It's all in the detail. This well thought of design focuses on family living allowing each member of the family their own space to relax and enjoy. Boasting a generously sized family, dining and kitchen area – you'll be looking for reasons to entertain. Contact us today to customise the Samson home to you!

 **FRONTAGE** 36.2m

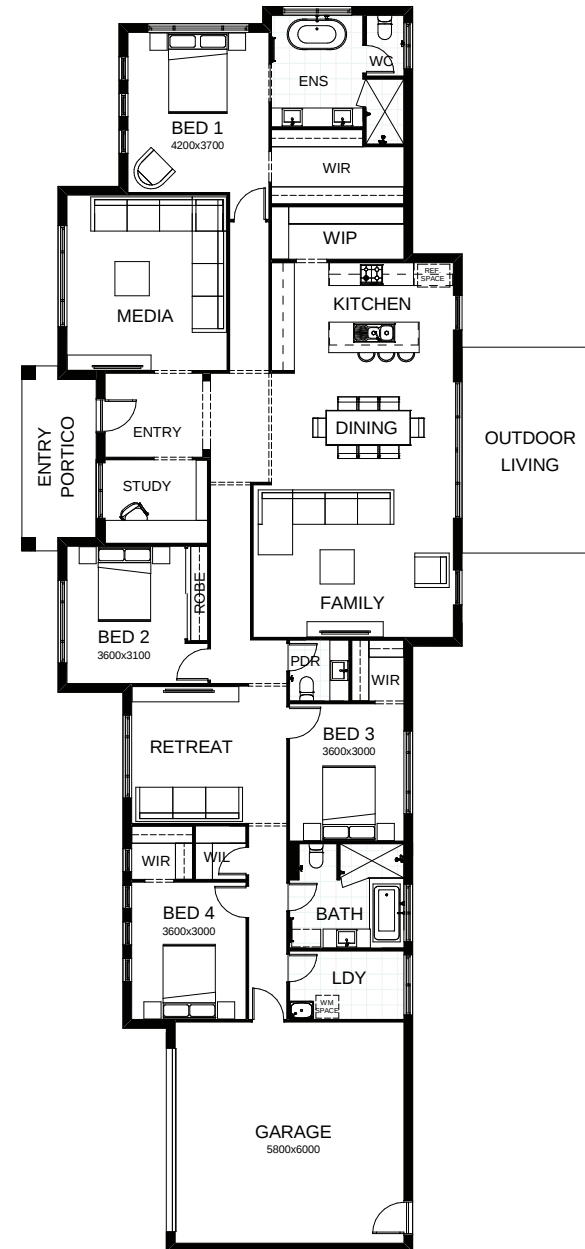
 **TOTAL FLOOR AREA** 300.4m<sup>2</sup>

 **EXTERNAL DIMENSIONS** 15.15m x 32.67m

 4  3  2.5  1  2



Your **dream home** starts here.



This document is produced for marketing and illustration purposes and should only be used as a guide. Please note all plans are not to scale, and all images, materials used and inclusions are indicative only. © Copyright of Bold Living.  
[boldliving.com.au](http://boldliving.com.au)

**BOLD LIVING**  
*create your dream*