


# Hudson 242

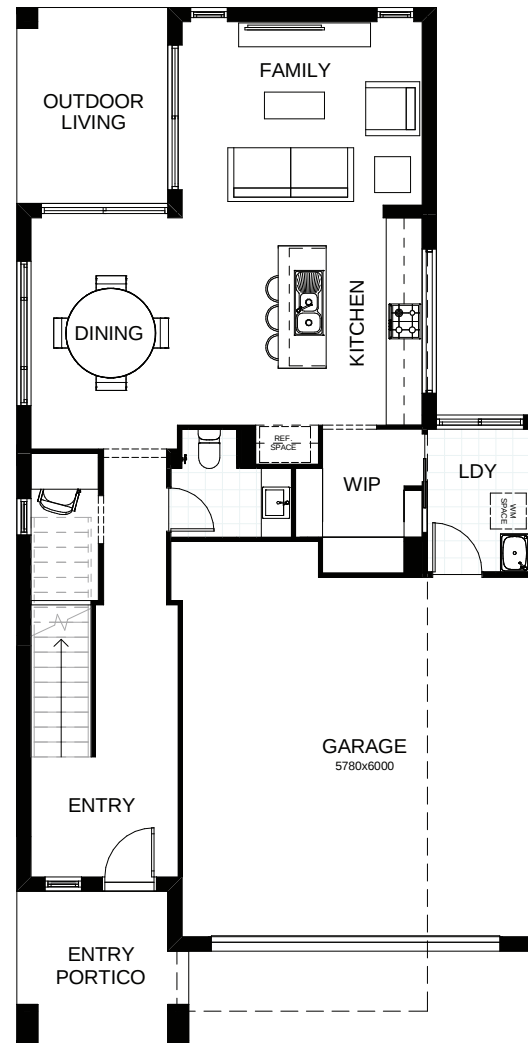
This exciting design combines stunning contemporary style with a very practical floorplan. Welcome to two storey living at its best, with living areas on the light and airy, open plan ground floor, and four bedrooms upstairs. Parents can take time out in their roomy master suite, which includes a walk-in robe and ensuite. Contact us today to customise the Hudson home to you!

 **FRONTAGE** 10m

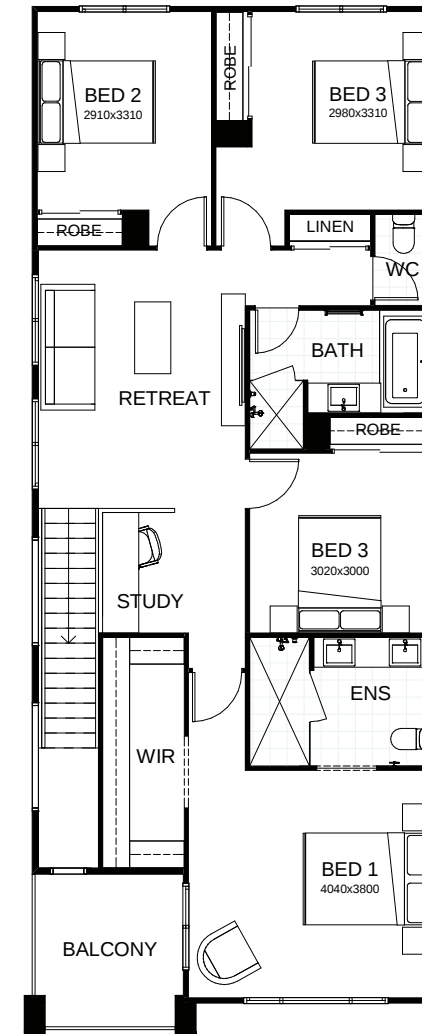
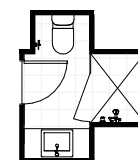
 **TOTAL FLOOR AREA** 242.9m<sup>2</sup>

 **EXTERNAL DIMENSIONS** 17.35m x 8.78m

 4  2  2.5  1  2



OPTION



This document is produced for marketing and illustration purposes and should only be used as a guide. Please note all plans are not to scale, and all images, materials used and inclusions are indicative only. © Copyright of Bold Living.  
boldliving.com.au

**BOLD LIVING**  
*create your dream*

Your **dream home** starts here.