

# Zeus 300

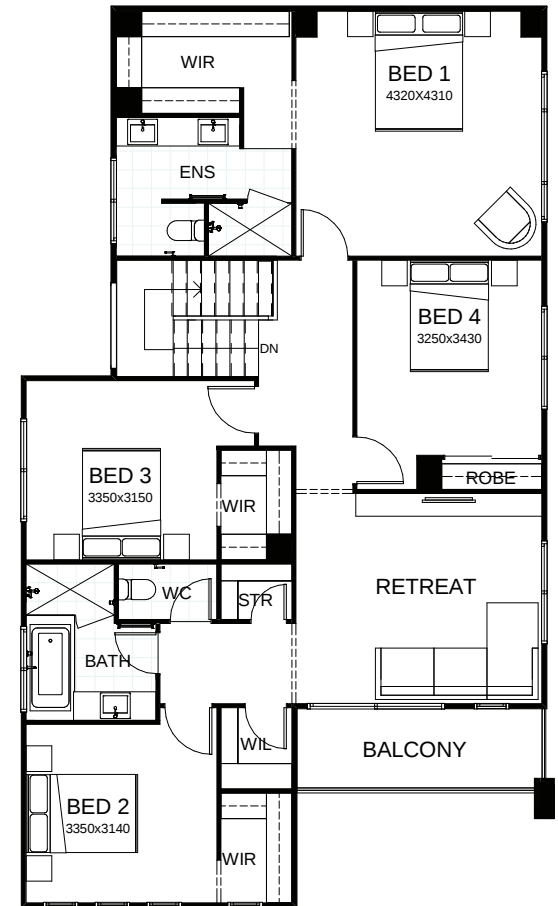
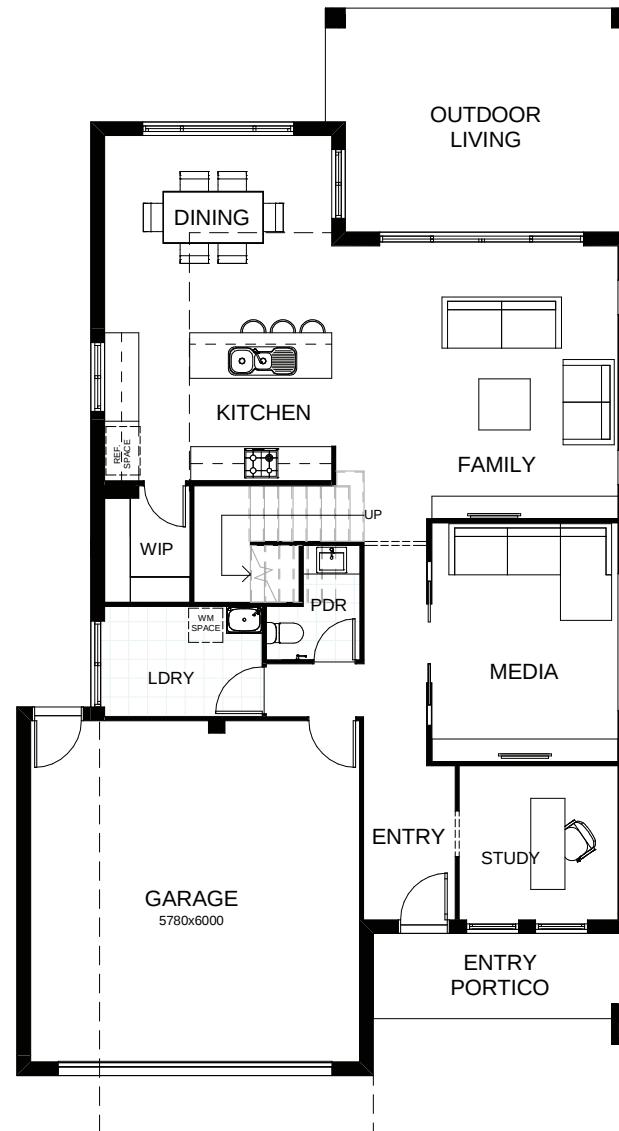
The best of contemporary architecture combines with intelligent design thinking in this two storey home. Four bedrooms, including a grand master suite with a massive walk-in robe, are upstairs. There's also a well-placed kids' retreat. Downstairs there's a large study, a walk-in pantry and integrated open plan living spaces tempting you out to the alfresco area. Contact us today to customise the Zeus home to you!

FRONTAGE 12m

TOTAL FLOOR AREA 300.4m<sup>2</sup>

EXTERNAL DIMENSIONS 19.77m x 10.8m

4 3 2.5 1 2



This document is produced for marketing and illustration purposes and should only be used as a guide. Please note all plans are not to scale, and all images, materials used and inclusions are indicative only. © Copyright of Bold Living.  
boldliving.com.au

**BOLD LIVING**  
*create your dream*

Your dream home starts here.