

# Kensington 367

This is a stunning modern two-story home to not only move into but grow into. The ingenuity of the Kensington range is how it reflects the common demands of many home buyers – functionality, elegance and utilising space in a savvy way. With three roomy living areas, four large bedrooms and a well-designed kitchen equipped with a huge walk-in pantry, this home is the perfect choice for families looking to enjoy a more spacious, comfortable lifestyle.

FRONTAGE 13.6m

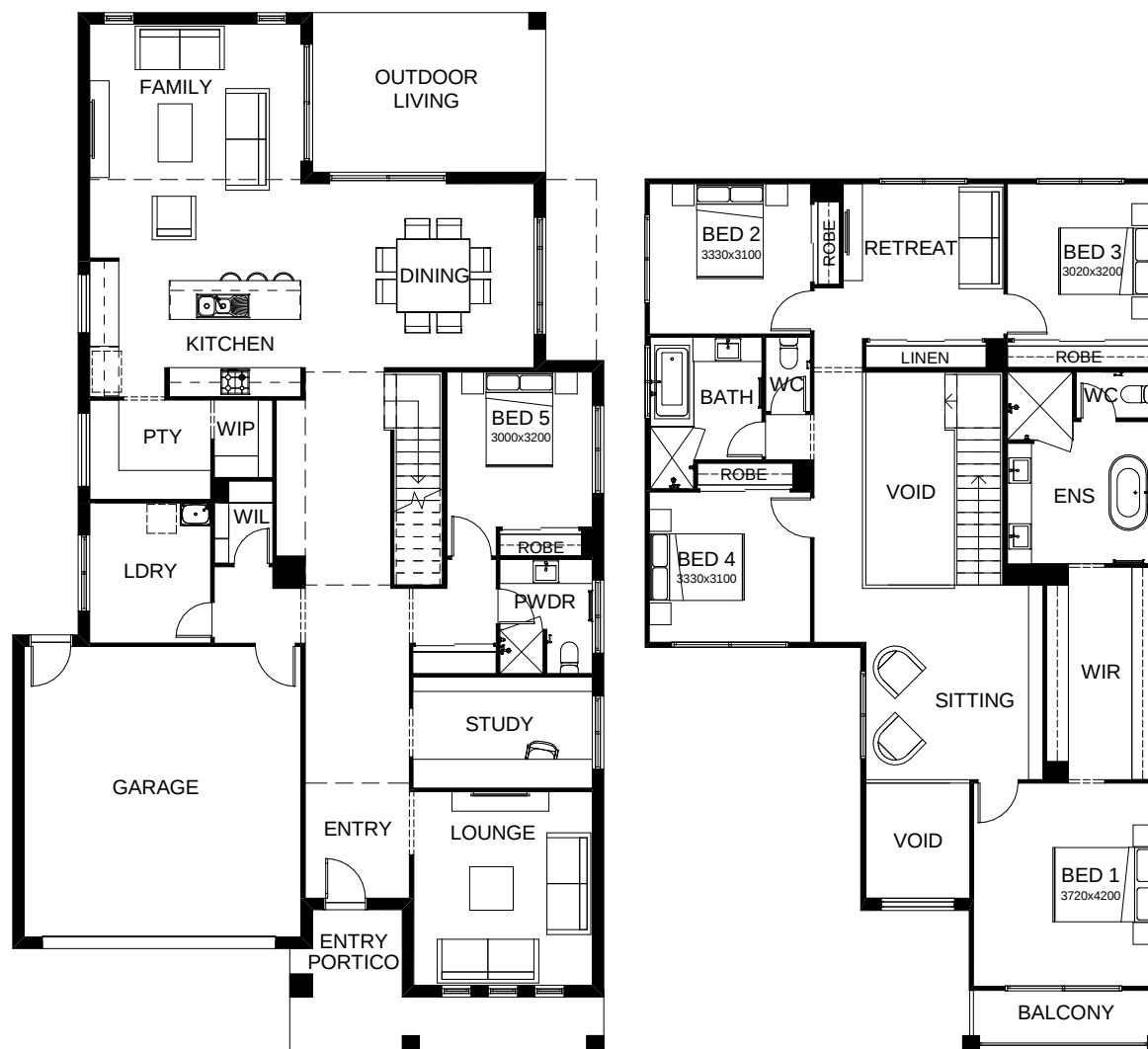
TOTAL FLOOR AREA 367.2m<sup>2</sup>

EXTERNAL DIMENSIONS 21.49m x 12.20m

5 4 3 1 2



Your dream home starts here.



This document is produced for marketing and illustration purposes and should only be used as a guide. Please note all plans are not to scale, and all images, materials used and inclusions are indicative only. © Copyright of Bold Living. [boldliving.com.au](http://boldliving.com.au)

**BOLD LIVING**  
create your dream