

Kensington 319

This is a stunning modern two-story home to not only move into but grow into. The ingenuity of the Kensington range is how it reflects the common demands of many home buyers – functionality, elegance and utilising space in a savvy way. With three roomy living areas, four large bedrooms and a well-designed kitchen equipped with a huge walk-in pantry, this home is the perfect choice for families looking to enjoy a more spacious, comfortable lifestyle.

FRONTAGE 14m

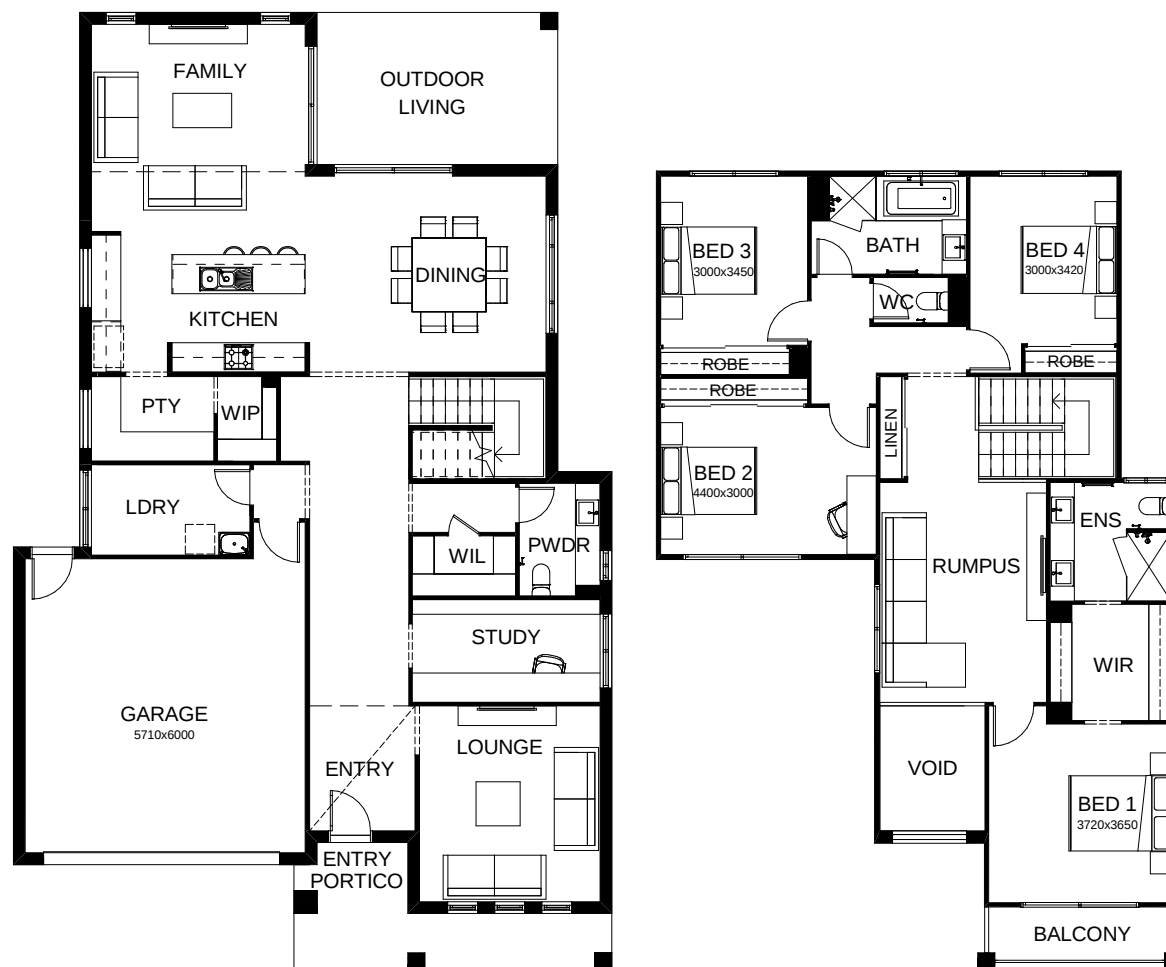
TOTAL FLOOR AREA 319.6m²

EXTERNAL DIMENSIONS 19.54m x 12.20m

4 3 2.5 1 2



Your dream home starts here.



This document is produced for marketing and illustration purposes and should only be used as a guide. Please note all plans are not to scale, and all images, materials used and inclusions are indicative only. © Copyright of Bold Living. boldliving.com.au

BOLD LIVING
create your dream