



Emerson 260

The Emerson is an intelligently designed family home delivering luxury without compromise. You're spoilt with two generous living spaces, a study and four bedrooms including an impressive master suite. The kitchen, living and dining is located at the heart of the home providing easy access to the rest of the house and a seamless flow directly to the outdoor living space. Contact us today to customise the Emerson home to you!

 **FRONTAGE** 16m

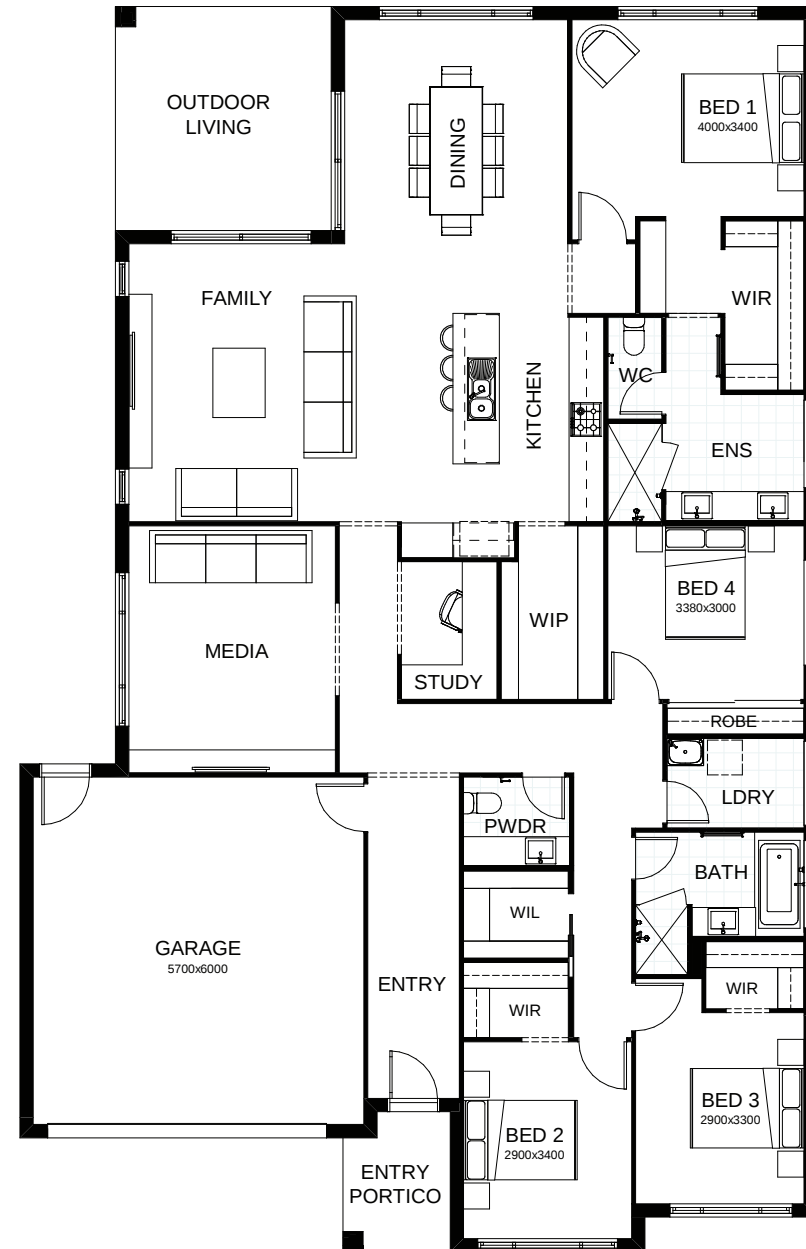
 **TOTAL FLOOR AREA** 260.9m²

 **EXTERNAL DIMENSIONS** 21.51m x 13.75m

 4  2  2.5  1  2



Your dream home starts here.



This document is produced for marketing and illustration purposes and should only be used as a guide. Please note all plans are not to scale, and all images, materials used and inclusions are indicative only. © Copyright of Bold Living. boldliving.com.au

BOLD LIVING
create your dream