

# Avery 232

Introducing a floor plan that's supremely inviting! This 4 bedroom home expertly ticks all the boxes – including an integrated family room, dining space and open kitchen, opening directly onto an outdoor living area that's perfect for entertaining. There's also a separate media room, a study nook and a spacious master suite complete with a generously-sized walk-in robe. Contact us today to customise the Avery home to you!

**FRONTAGE** 12.5m

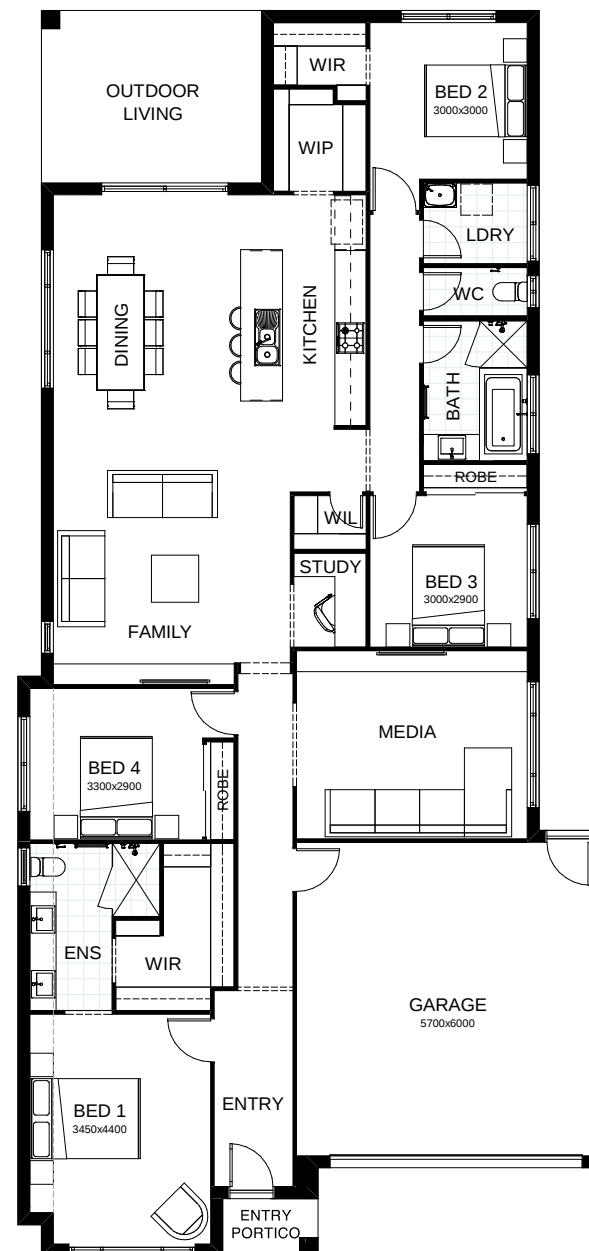
**TOTAL FLOOR AREA** 232.6m<sup>2</sup>

**EXTERNAL DIMENSIONS** 23.85m x 11.25m

4 2 2 1 2



Your **dream home** starts here.



This document is produced for marketing and illustration purposes and should only be used as a guide. Please note all plans are not to scale, and all images, materials used and inclusions are indicative only. © Copyright of Bold Living. [boldliving.com.au](http://boldliving.com.au)

**BOLD LIVING**  
create your dream