

# Avery 191

Introducing a floor plan that's supremely inviting! This 4 bedroom home expertly ticks all the boxes – including an integrated family room, dining space and open kitchen, opening directly onto an outdoor living area that's perfect for entertaining. There's also a separate media room, a study nook and a spacious master suite complete with a generously-sized walk-in robe. Contact us today to customise the Avery home to you!

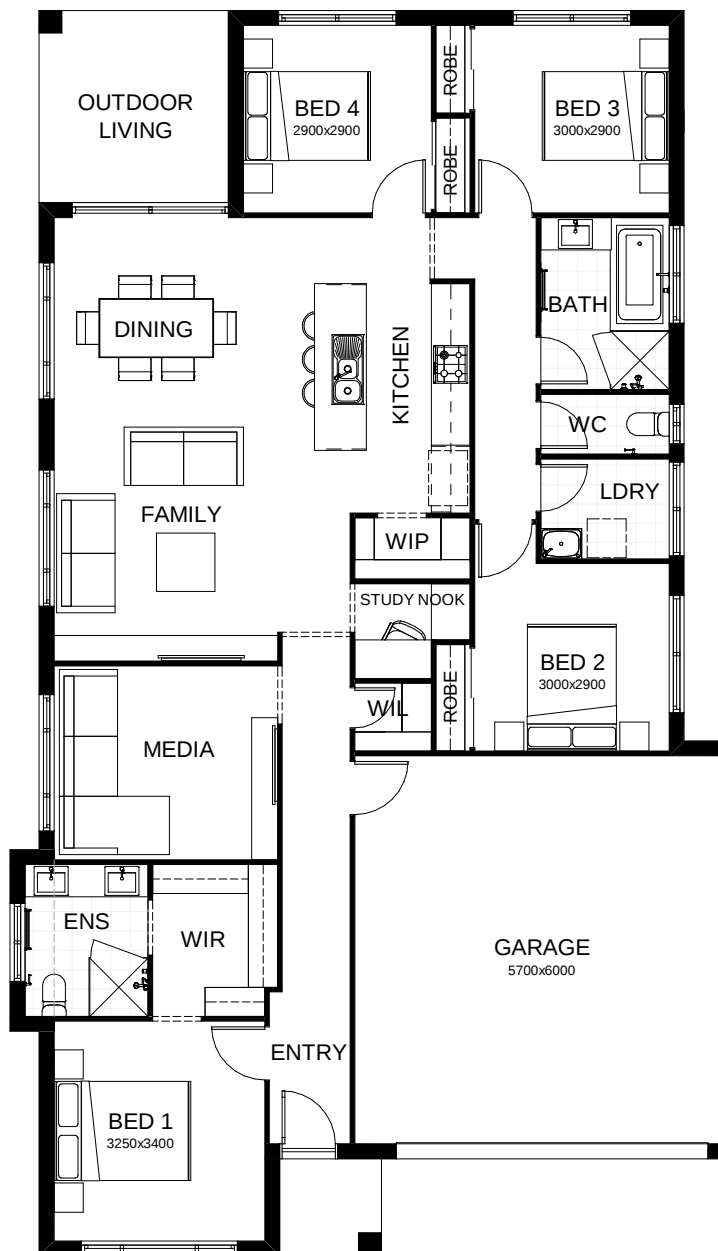
**FRONTAGE** 12.5m

**TOTAL FLOOR AREA** 191.3m<sup>2</sup>

**EXTERNAL DIMENSIONS** 19.25m x 11.25m



Your **dream home** starts here.



This document is produced for marketing and illustration purposes and should only be used as a guide. Please note all plans are not to scale, and all images, materials used and inclusions are indicative only. © Copyright of Bold Living.  
boldliving.com.au

**BOLD LIVING**  
*create your dream*