

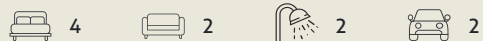
Avery 185

Introducing a floor plan that's supremely inviting! This 4 bedroom home expertly ticks all the boxes – including an integrated family room, dining space and open kitchen, opening directly onto an outdoor living area that's perfect for entertaining. There's also a separate media room, a study nook and a spacious master suite complete with a generously-sized walk-in robe. Contact us today to customise the Avery home to you!

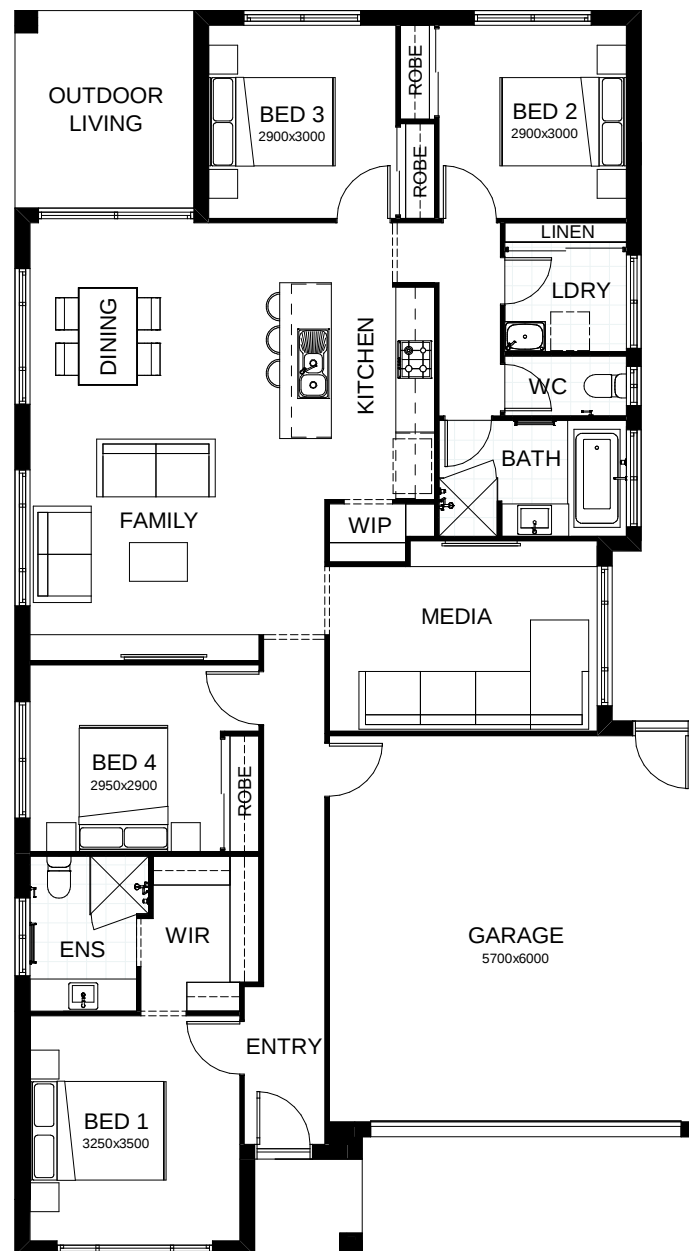
FRONTAGE 12.5m

TOTAL FLOOR AREA 185.6m²

EXTERNAL DIMENSIONS 19.35m x 10.8m



Your **dream home** starts here.



This document is produced for marketing and illustration purposes and should only be used as a guide. Please note all plans are not to scale, and all images, materials used and inclusions are indicative only. © Copyright of Bold Living.
boldliving.com.au

BOLD LIVING
create your dream