

Balwyn 317

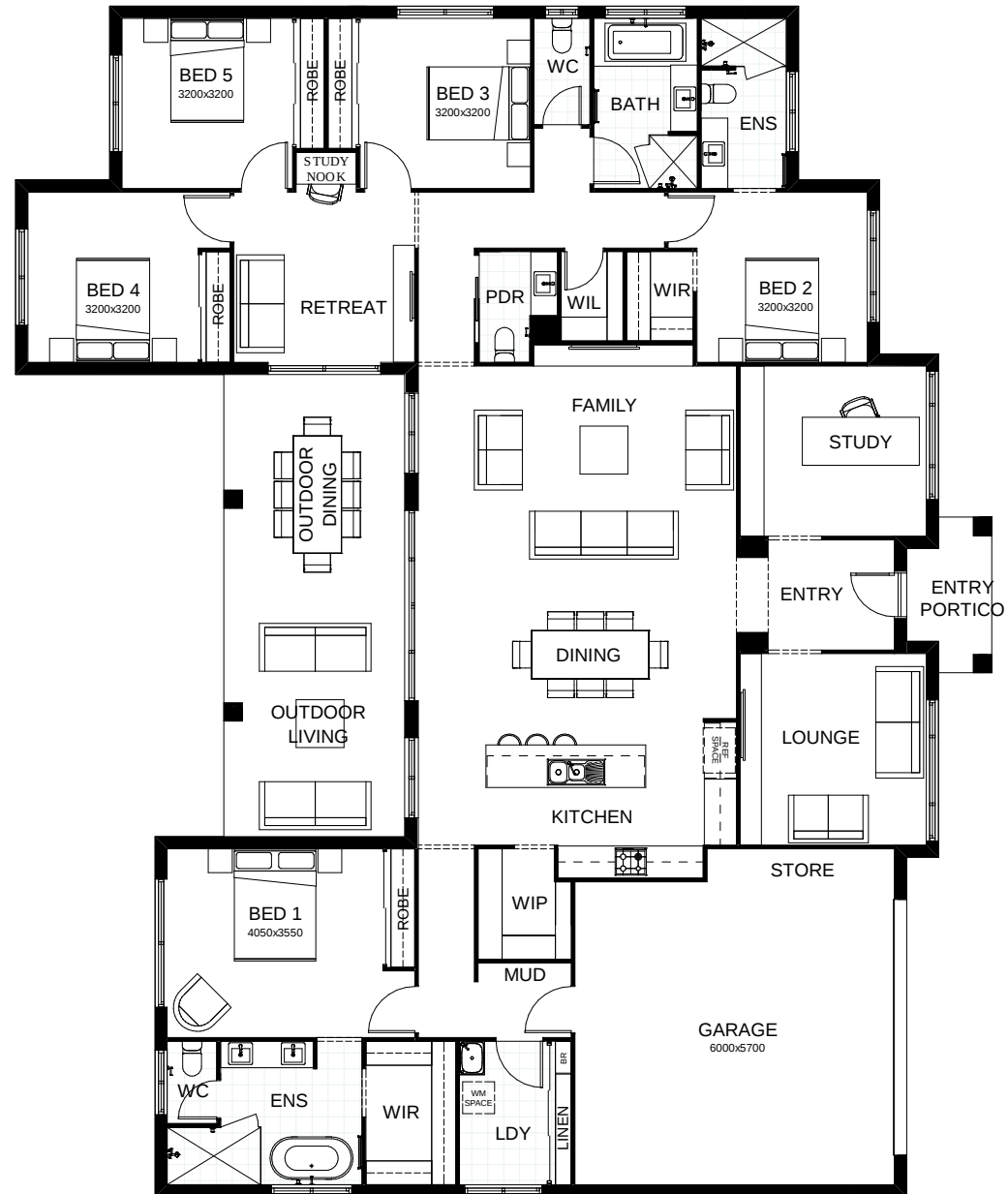
This impressive residence incorporates every desirable luxury with expansive contemporary style! All 5 bedrooms include roomy walk-in robes while the master suite, in its own private wing, boasts two. The stylishly appointed kitchen, dining and family rooms form the central hub, interacting directly with the grand scale alfresco entertaining space. There's a spacious lounge, plus a large study and a study nook. This is light, bright, fabulous family living!

FRONTAGE 26.5m

TOTAL FLOOR AREA 317.8m²

EXTERNAL DIMENSIONS 18.34m x 22.4m

5 3 4 2 2



This document is produced for marketing and illustration purposes and should only be used as a guide. Please note all plans are not to scale, and all images, materials used and inclusions are indicative only. © Copyright of Bold Living.
boldliving.com.au

BOLD LIVING
create your dream

Your dream home starts here.