

Aspen 528

Family, friends, neighbours – there's room to host everyone in this exciting four bedroom contemporary home. Imagine enjoying its multiple living areas including a huge outdoor entertaining space, integrated family room/dining areas and a kitchen to covet, with a must-have butler's pantry. There's a separate formal lounge, an upstairs retreat and balcony, plus two studies – feel free to use one as a multi-purpose room.

FRONTAGE 29m

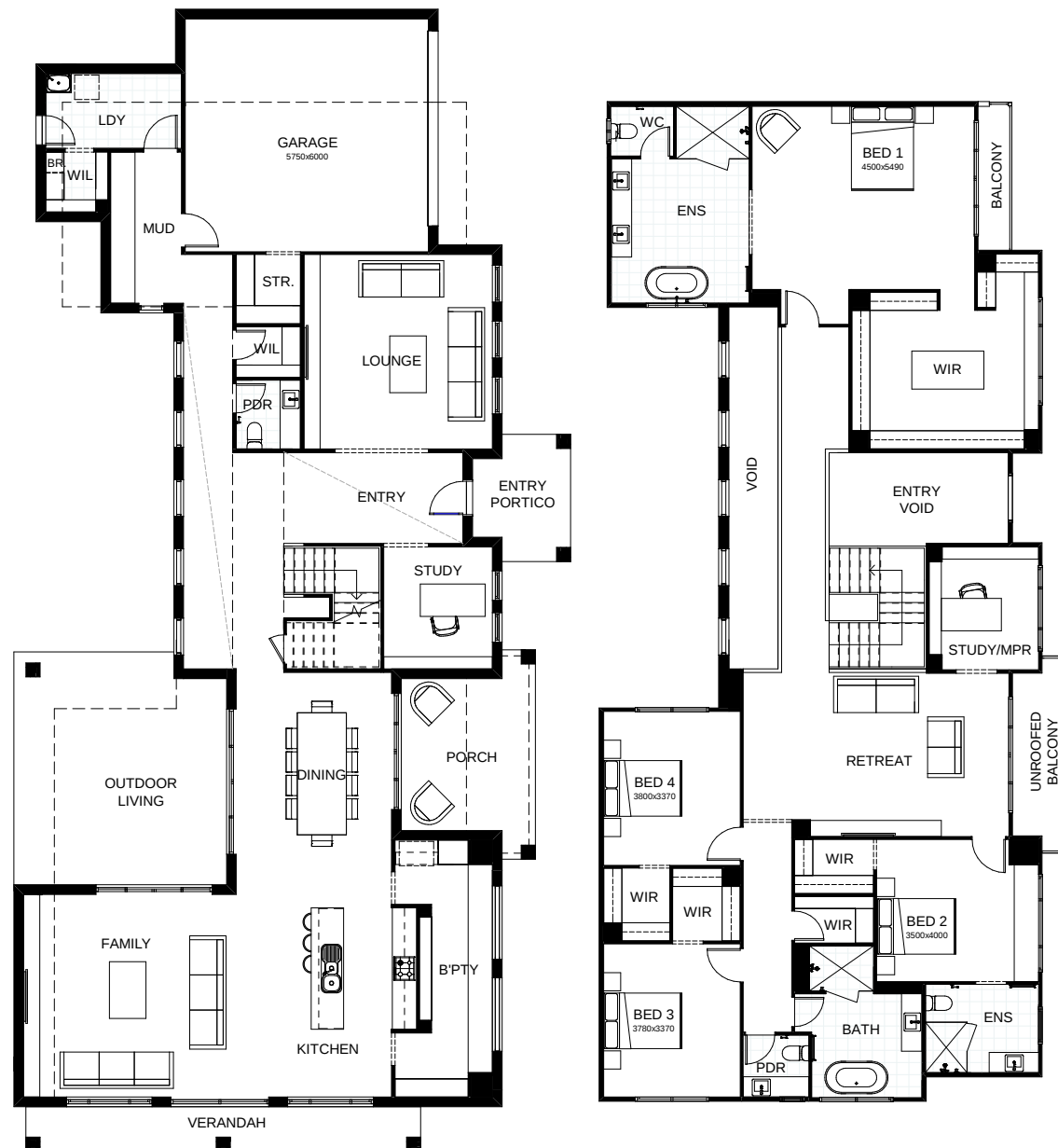
TOTAL FLOOR AREA 528.2m²

EXTERNAL DIMENSIONS 13.74m x 28.2m

4 3 4 2 2



Your dream home starts here.



This document is produced for marketing and illustration purposes and should only be used as a guide. Please note all plans are not to scale, and all images, materials used and inclusions are indicative only. © Copyright of Bold Living. boldliving.com.au

BOLD LIVING
create your dream