

Flemington 355

This beautifully crafted contemporary residence combines size and style. Open plan living, dining and kitchen areas are complemented by a separate media room, integrated indoor/outdoor living areas and a clever home office space. There's also a walk in pantry, to bring out the entertainer in you! The spacious master suite includes a generously sized parents retreat, while children's rooms are positioned for privacy at the other end of the house.

FRONTAGE 10m

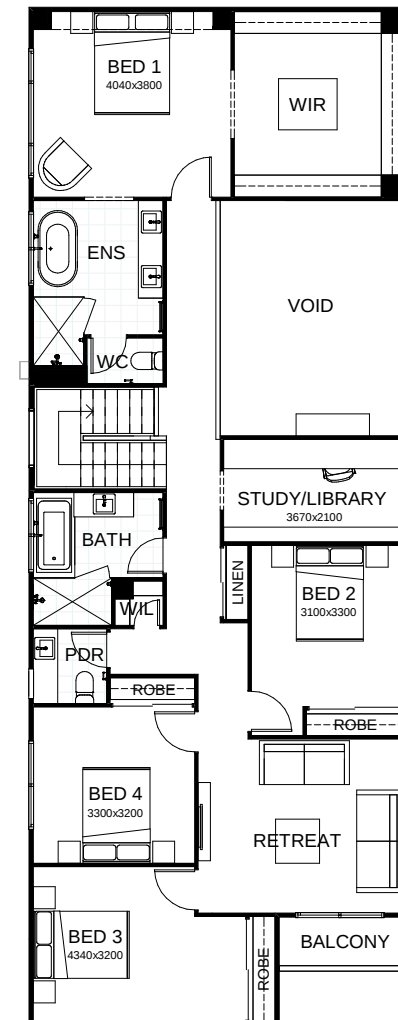
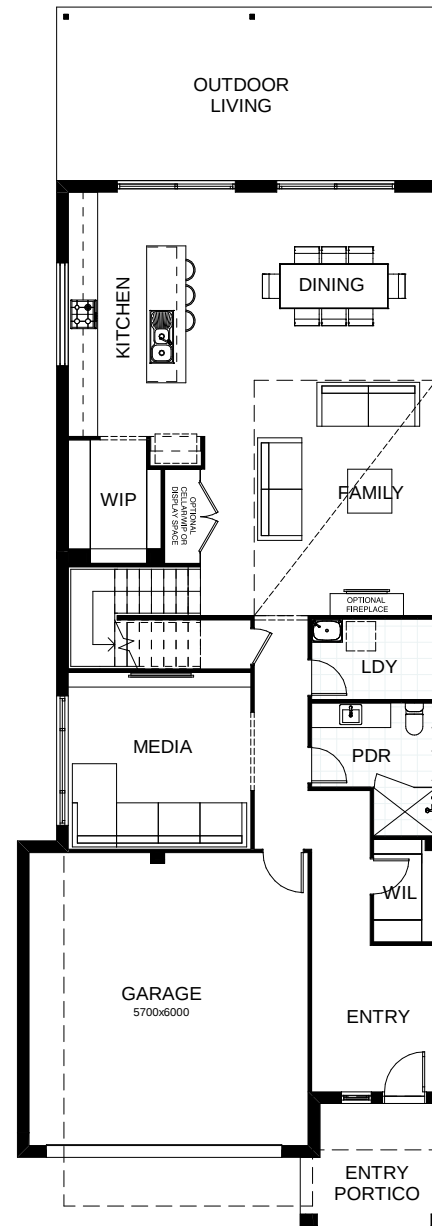
TOTAL FLOOR AREA 354.4m²

EXTERNAL DIMENSIONS 24.91m x 8.8m

4 3 2.5 1 2



Your dream home starts here.



This document is produced for marketing and illustration purposes and should only be used as a guide. Please note all plans are not to scale, and all images, materials used and inclusions are indicative only. © Copyright of Bold Living. boldliving.com.au

BOLD LIVING
create your dream