



ZEUS 300

The best of contemporary architecture combines with intelligent design thinking in this two storey home. Four bedrooms, including a grand master suite with a massive walk-in robe, are upstairs. There's also a well-placed kids' retreat. Downstairs there's a large study, a walk-in pantry and integrated open plan living spaces tempting you out to the alfresco area. Contact us today to customise the Zeus home to you!

FRONTAGE 12m

EXTERIOR 19.77m x 10.8m

TOTAL FLOOR AREA 300.4m²

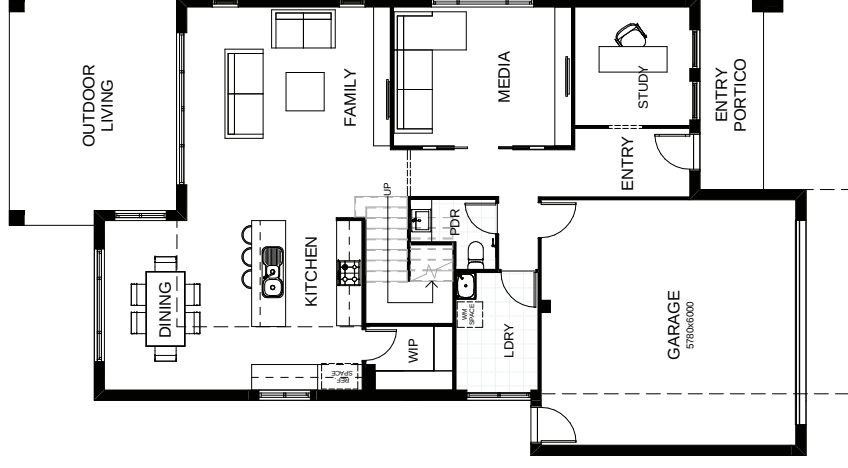


This document is produced for marketing and illustration purposes and should only be used as a guide. Please note, all plans are not to scale, and all images, materials used and inclusions are indicative only. Copyright of Total Living



ZEUS 324

The best of contemporary architecture combines with intelligent design thinking in this two storey home. Four bedrooms, including a grand master suite with a massive walk-in robe, are upstairs. There's also a well-placed kids' retreat. Downstairs there's a large study, a walk-in pantry and integrated open plan living spaces tempting you out to the alfresco area. Contact us today to customise the Zeus home to you!



create your dream

