



VIENNA 194

This thought out design includes everything required for comfortable family living. Featuring a spacious living space connecting everyone to the alfresco area, a generous master suite and a separate study nook. Contact us today to customise the Vienna home to you!

FRONTAGE 12m

EXTERIOR 19.94m x 10.8m

TOTAL FLOOR AREA 194.1m²

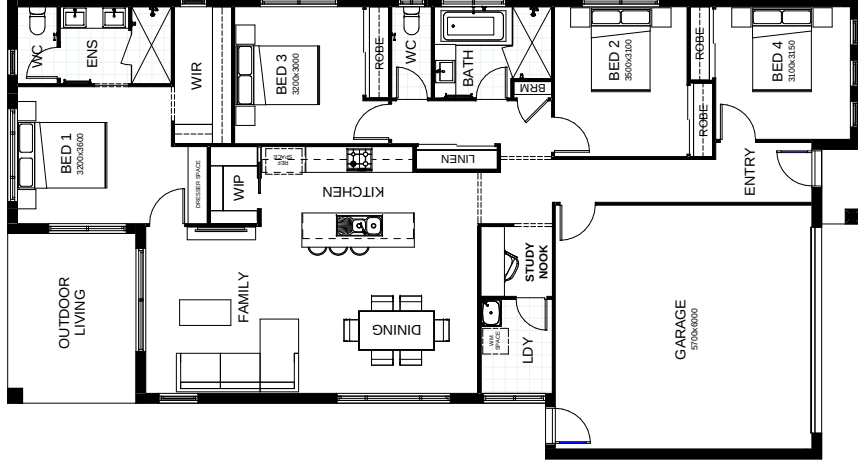


This document is produced for marketing and illustration purposes and should only be used as a guide. Please note, all plans are not to scale, and all images, materials used and inclusions are indicative only. Copyright of Total Living



VIENNA 213

This thought out design includes everything required for comfortable family living. Featuring a spacious living space connecting everyone to the alfresco area, a generous master suite and a separate study nook. Contact us today to customise the Vienna home to you!



create your dream

