



## SAMSON 241

It's all in the detail. This well thought of design focuses on family living allowing each member of the family their own space to relax and enjoy. Boasting a generously sized family, dining and kitchen area – you'll be looking for reasons to entertain. Contact us today to customise the Samson home to you!

**FRONTAGE** 31.2m

**EXTERIOR** 14.71m x 27.27m

**TOTAL FLOOR AREA** 241m<sup>2</sup>

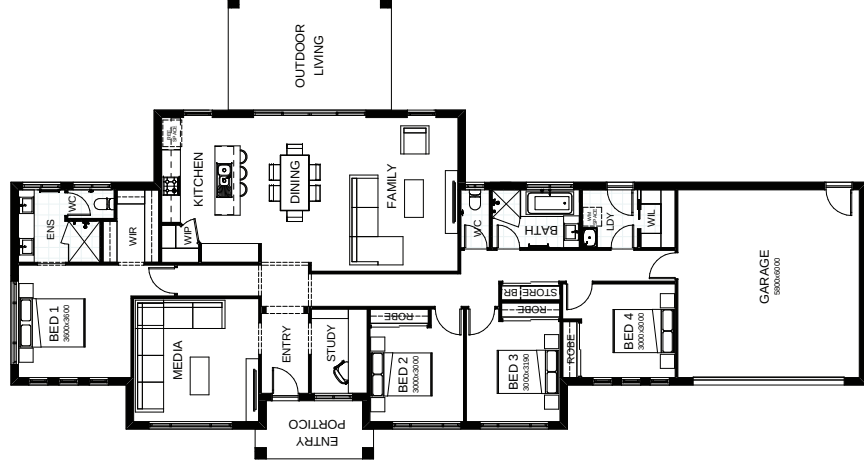


This document is produced for marketing and illustration purposes and should only be used as a guide. Please note all plans are not to scale and all images, materials used and inclusions are indicative only. Copyright of Total Living



## SAMSON 268

It's all in the detail. This well thought of design focuses on family living allowing each member of the family their own space to relax and enjoy. Boasting a generously sized family, dining and kitchen area – you'll be looking for reasons to entertain. Contact us today to customise the Samson home to you!



*create your dream*

