



PORTOFINO 203

Another four bedroom home that is cleverly designed for families and entertaining. Featuring a seamless flow between kitchen, dining and alfresco, this design presents irresistible entertaining options! Including a butlers pantry and separate study, this home has everything! Contact us today to customise the Portofino home to you!

FRONTAGE 12.5m

EXTERIOR 20.28m x 11.30m

TOTAL FLOOR AREA 203.4m²

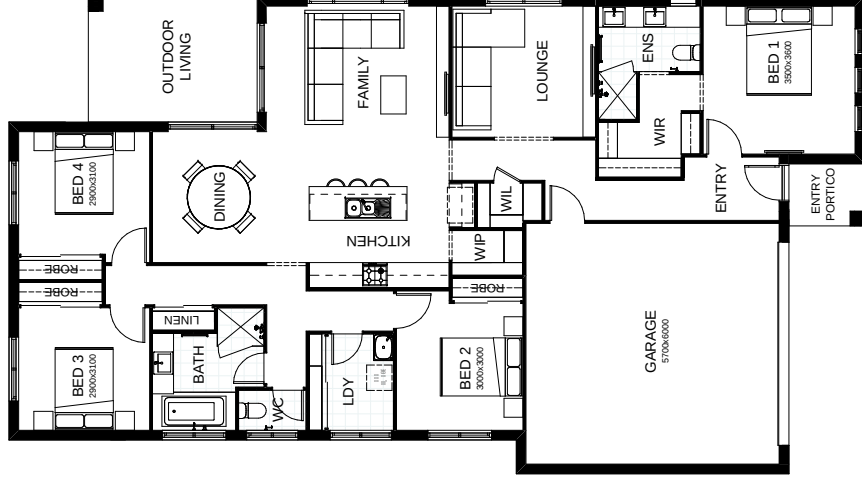


This document is produced for marketing and illustration purposes and should only be used as a guide. Please note, all plans are not to scale, and all images, materials used and inclusions are indicative only. Copyright of Total Living



PORTOFINO 225

Another four bedroom home that is cleverly designed for families and entertaining. Featuring a seamless flow between kitchen, dining and alfresco, this design presents irresistible entertaining options! Including a butlers pantry and separate study, this home has everything! Contact us today to customise the Portofino home to you!



create your dream

