



# NEWPORT 216

Family living is the focus in this cleverly-executed, spacious, one level home. You'll see its four bedrooms include a master suite with walk-in robe, and separately zoned children's rooms. There's also a large media room and a study. From the open plan living, kitchen and dining spaces, you move directly out to the outdoor entertaining area.

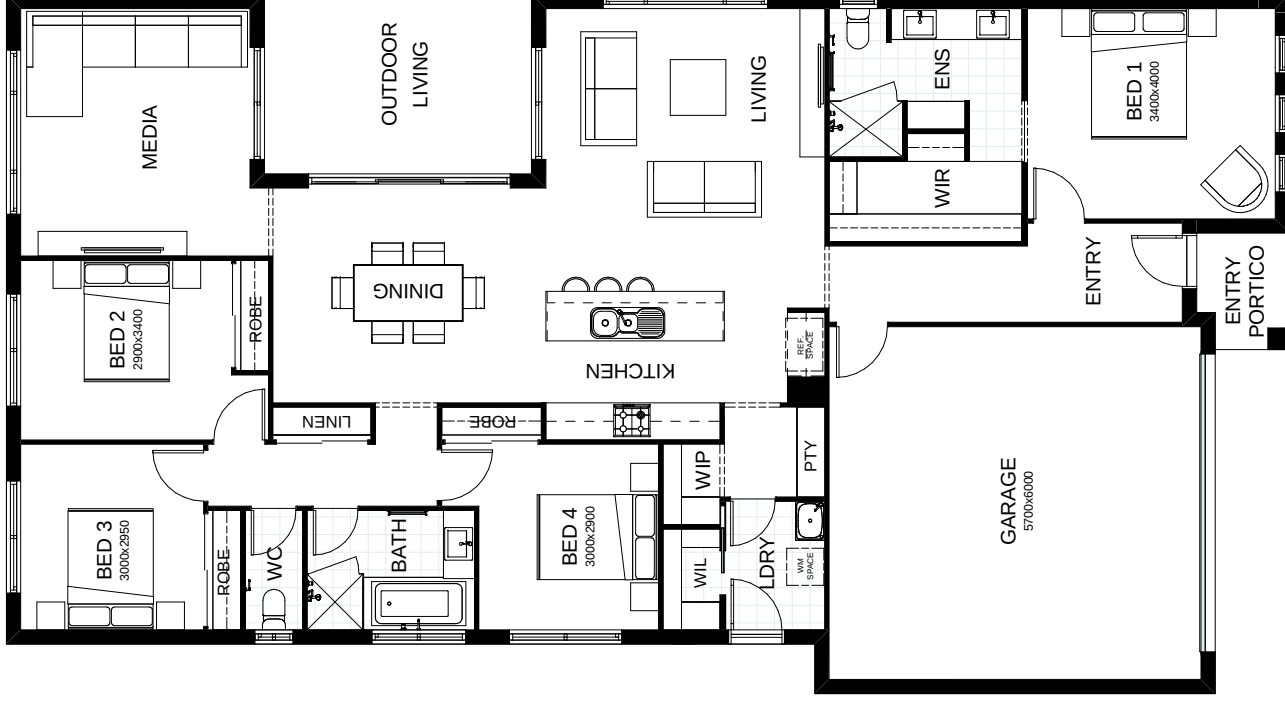
FRONTAGE 13.7m

EXTERIOR 23.11m x 12.5m

TOTAL FLOOR AREA 216.8m<sup>2</sup>



This document is produced for marketing and illustration purposes and should only be used as a guide. Please note all plans are not to scale, and all images, materials used and inclusions are indicative only. Copyright of Bold Living



*create your dream*

