



LENNOX 300

This dazzling 4 bedroom design showcases multiple living spaces ideal for both family fun and private moments; an upstairs rumpus room the kids can call their own, a master suite with a huge walk-in robe, and study areas on both levels. At the heart of it all, the entertainer's kitchen is the hub around which the dining room, family room and outdoor living area are gathered. Contact us today to customise the Lennox home to you!

FRONTAGE 12.5m

EXTERIOR 18.63m x 11.25m

TOTAL FLOOR AREA 300.3m²

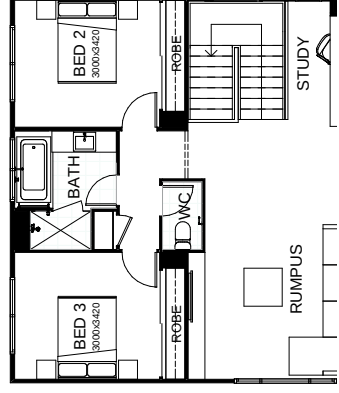
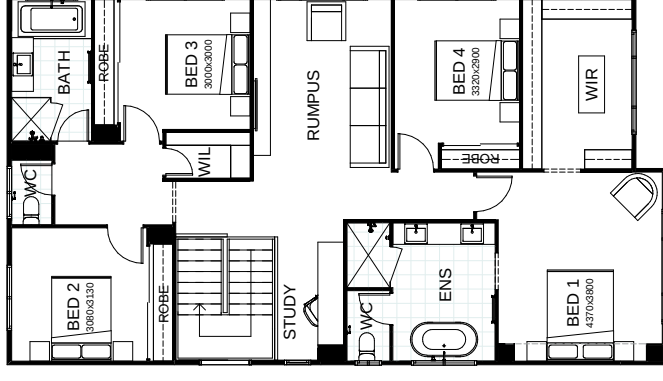


This document is produced for marketing and illustration purposes and should only be used as a guide. Please note all plans are not to scale and all images, materials used and inclusions are indicative only. Copyright of Total Living



LENNOX 337

This dazzling 4 bedroom design showcases multiple living spaces ideal for both family fun and private moments; an upstairs rumpus room the kids can call their own, a master suite with a huge walk-in robe, and study areas on both levels. At the heart of it all, the entertainer's kitchen is the hub around which the dining room, family room and outdoor living area are gathered. Contact us today to customise the Lennox



create your dream