



KENSINGTON 319

The ingenuity behind the Kensington range reflects the common demands of many home buyers; functionality, elegance and utilising every space in a savvy way – a modern two-story home to not only move into, but grow into. With three roomy living areas, four large bedrooms and a well-designed kitchen equipped with a huge walk in pantry, this home is the perfect choice for families looking to enjoy a more spacious, comfortable home. Contact us today to customise the Kensington home to you!

FRONTAGE 14m

EXTERIOR 19.54m x 12.20m

TOTAL FLOOR AREA 319.6m²

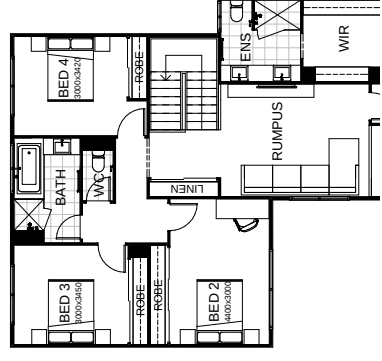
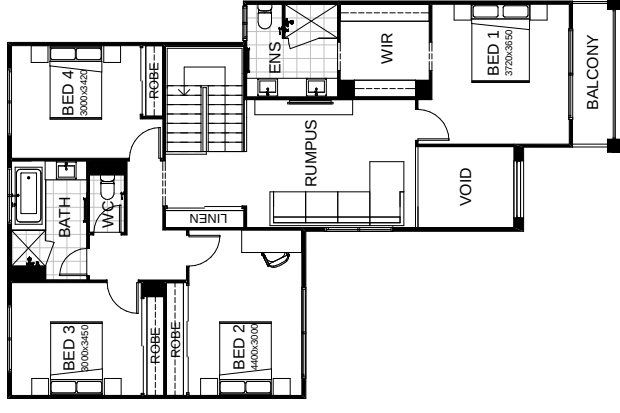


This document is produced for marketing and illustration purposes and should only be used as a guide. Please note, all plans are not to scale, and all images, materials used and inclusions are indicative only. Copyright of Total Living



KENSINGTON 319 B5

The ingenuity behind the Kensington range reflects the common demands of many home buyers; functionality, elegance and utilising every space in a savvy way – a modern two-story home to not only move into, but grow into. With three roomy living areas, four large bedrooms and a well-designed kitchen equipped with a huge walk in pantry, this home is the perfect choice for families looking to enjoy a more spacious, comfortable



create your dream

