



HUDSON 242

Welcome to two storey living at its best! As you enter, living spaces and a study area are included on the airy open plan ground floor, flowing through to the veranda. Upstairs you'll find all four bedrooms, plus a second living area and an office. The roomy master suite includes a walk-in robe and ensuite. Altogether, this stunning home offers contemporary style and practicality combined.

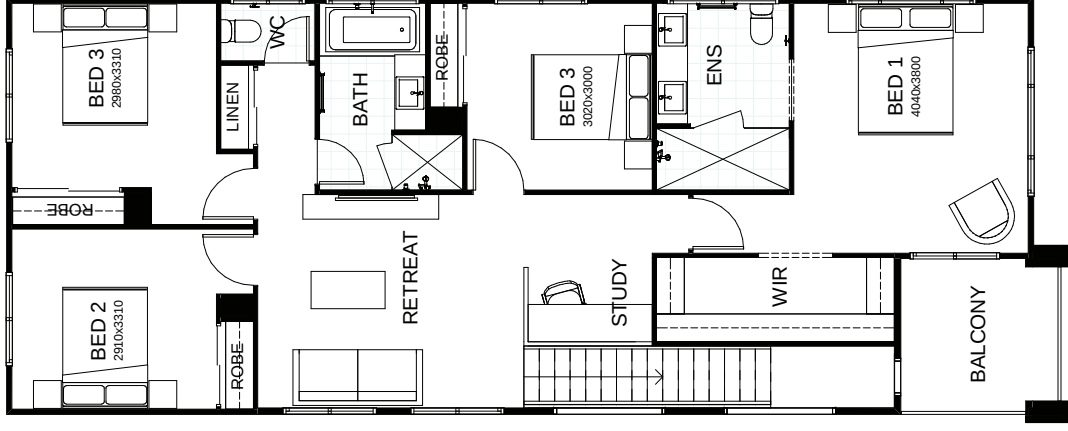
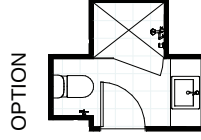
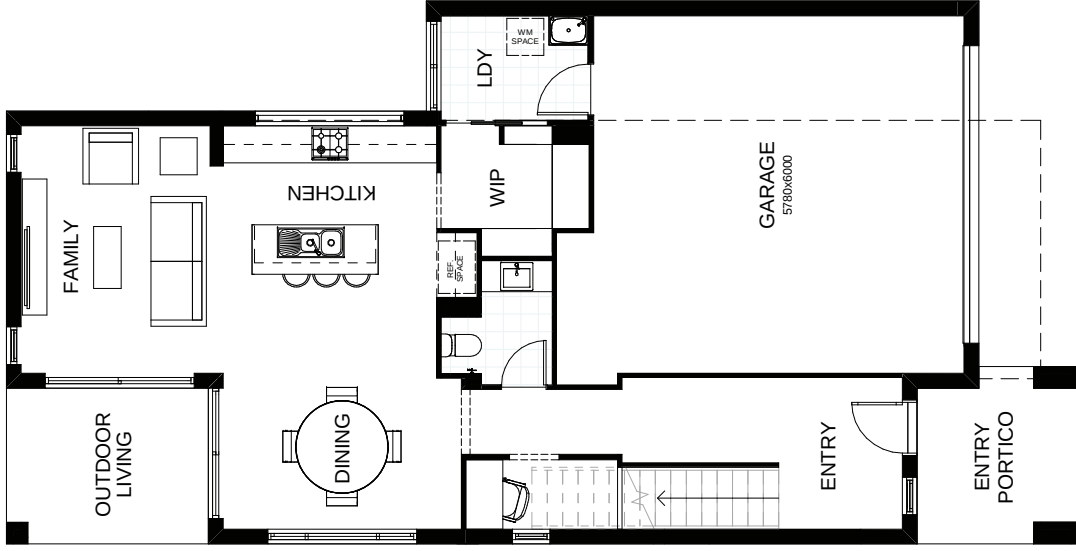
FRONTAGE 10m

EXTERIOR 17.35m x 8.78m

TOTAL FLOOR AREA 242.9m²

 4
  2
  2.5
  1
  2

 VIRTUAL TOUR



This document is produced for marketing and illustration purposes and should only be used as a guide. Please note all plans are not to scale, and all images, materials used and inclusions are indicative only. Copyright of Bold Living

create your dream

