



ELWOOD 232

This clever single level design is one to delight the entire family. Boasting three spacious living areas and four bedrooms including a luxurious master suite with ensuite and walk in robe – there is room for everyone.

The kitchen, living and dining form the heart of the home, opening out to the spacious outdoor living space suited perfectly for entertaining. Contact us today to customise the Elwood home to you!

FRONTAGE 1.4m

EXTERIOR 19.70m x 12.80m

TOTAL FLOOR AREA 232m²



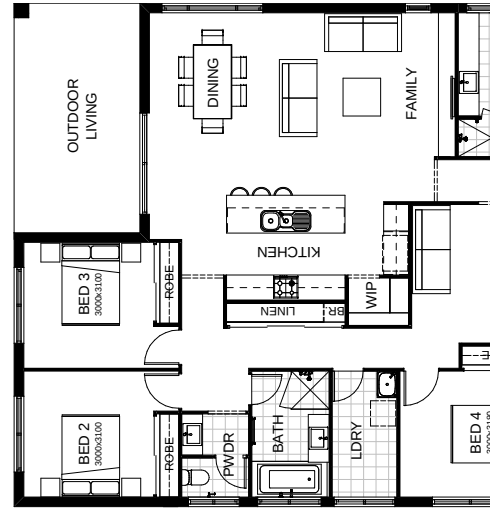
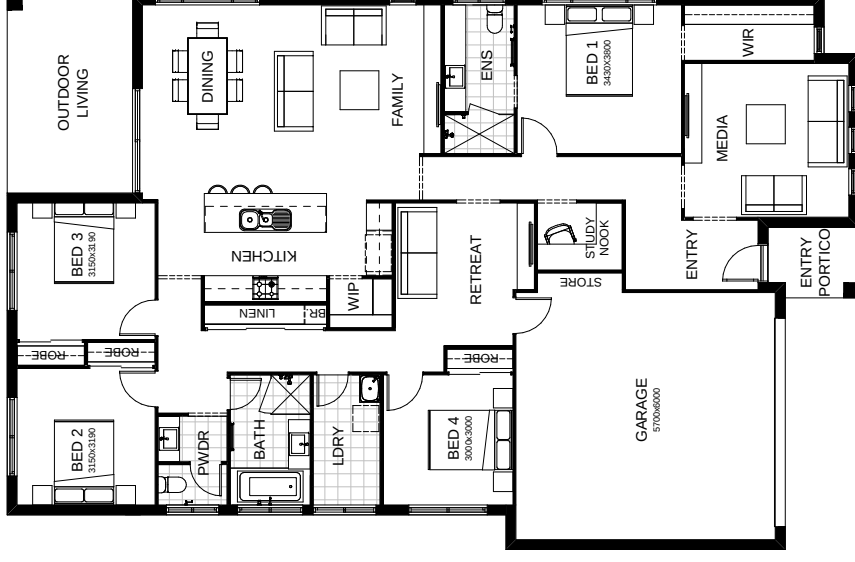
This document is produced for marketing and illustration purposes and should only be used as a guide. Please note all plans are not to scale and all images, materials used and inclusions are indicative only. Copyright of Total Living



ELWOOD 240

This clever single level design is one to delight the entire family. Boasting three spacious living areas and four bedrooms including a luxurious master suite with ensuite and walk in robe – there is room for everyone.

The kitchen, living and dining form the heart of the home, opening out to the spacious outdoor living space suited perfectly for entertaining. Contact us today to customise the Elwood home to you!



create your dream

