



BENSON 405

Feast your eyes on this modern masterpiece, with all the style and space you'll ever need. With four bedrooms, three living areas, an impressively large kitchen with butler's pantry, two very flexible study areas, a media room and a separate private sitting room there's no end to the possibilities! The feeling is open and airy, enhanced by the design's large void and the extra large outdoor living area.

FRONTAGE 14m

EXTERIOR 18.96m x 12.8m

TOTAL FLOOR AREA 405.6m²

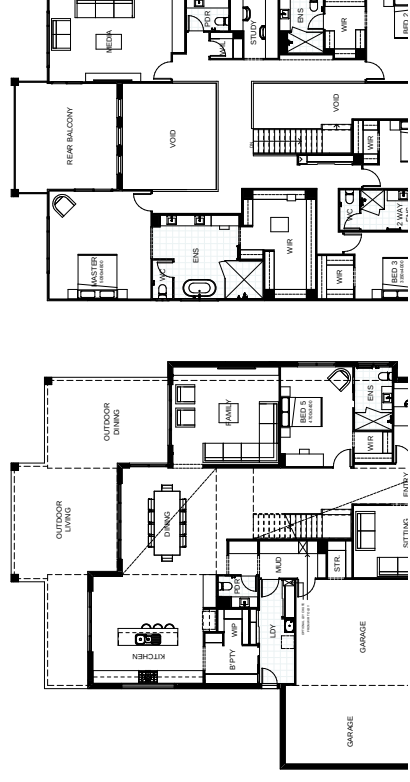
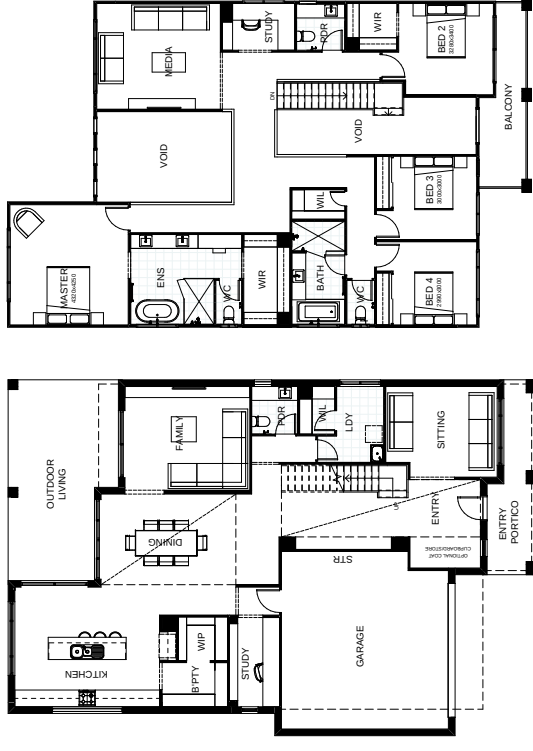


This document is produced for marketing and illustration purposes and should only be used as a guide. Please note all plans are not to scale, and all images, materials used and inclusions are indicative only. Copyright of Field Living



BENSON 623

Feast your eyes on this modern masterpiece, with all the style and space you'll ever need. With four bedrooms, three living areas, an impressively large kitchen with butler's pantry, two very flexible study areas, a media room and a separate private sitting room there's no end to the possibilities! The feeling is open and airy, enhanced by the design's large void and the extra large



create your dream

