



BALLARAT 215

Relax into the comfortable lifestyle of your dreams, in this stunning contemporary home. The open plan kitchen, dining space and family room link directly with the large outdoor living area. There's also a butler's pantry and walk-in pantry, separate study/library, three kids' bedrooms with a retreat area, and a master suite positioned for privacy. Contact us today to customise the Ballarat home to you!

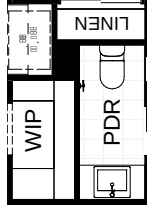
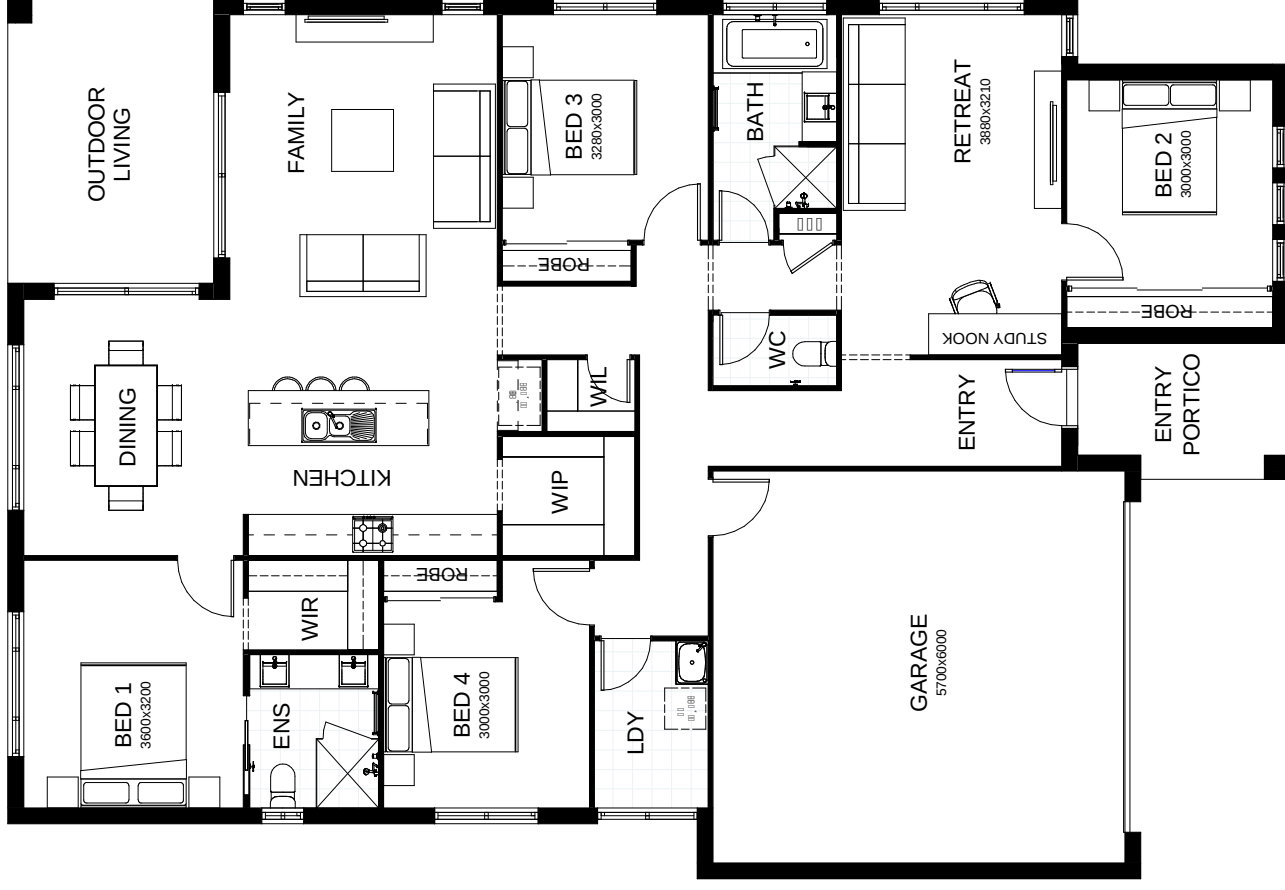
FRONTAGE 14m

EXTERIOR 18.65m x 12.8m

TOTAL FLOOR AREA 215.3m²



This document is produced for marketing and illustration purposes and should only be used as a guide. Please note all plans are not to scale, and all images, materials used and inclusions are indicative only. Copyright of Bold Living



create your dream

