



# BALLARAT 215

In this brilliant contemporary four bedroom home the dream kitchen, with a butler's pantry and walk-in pantry, opens into the dining space and family room and leads you through to the large outdoor living area. There's also a separate study/library, and three kids' bedrooms with a retreat area just for them, and a large master suite with walk-in robe.

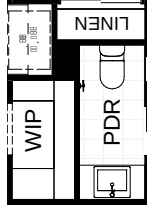
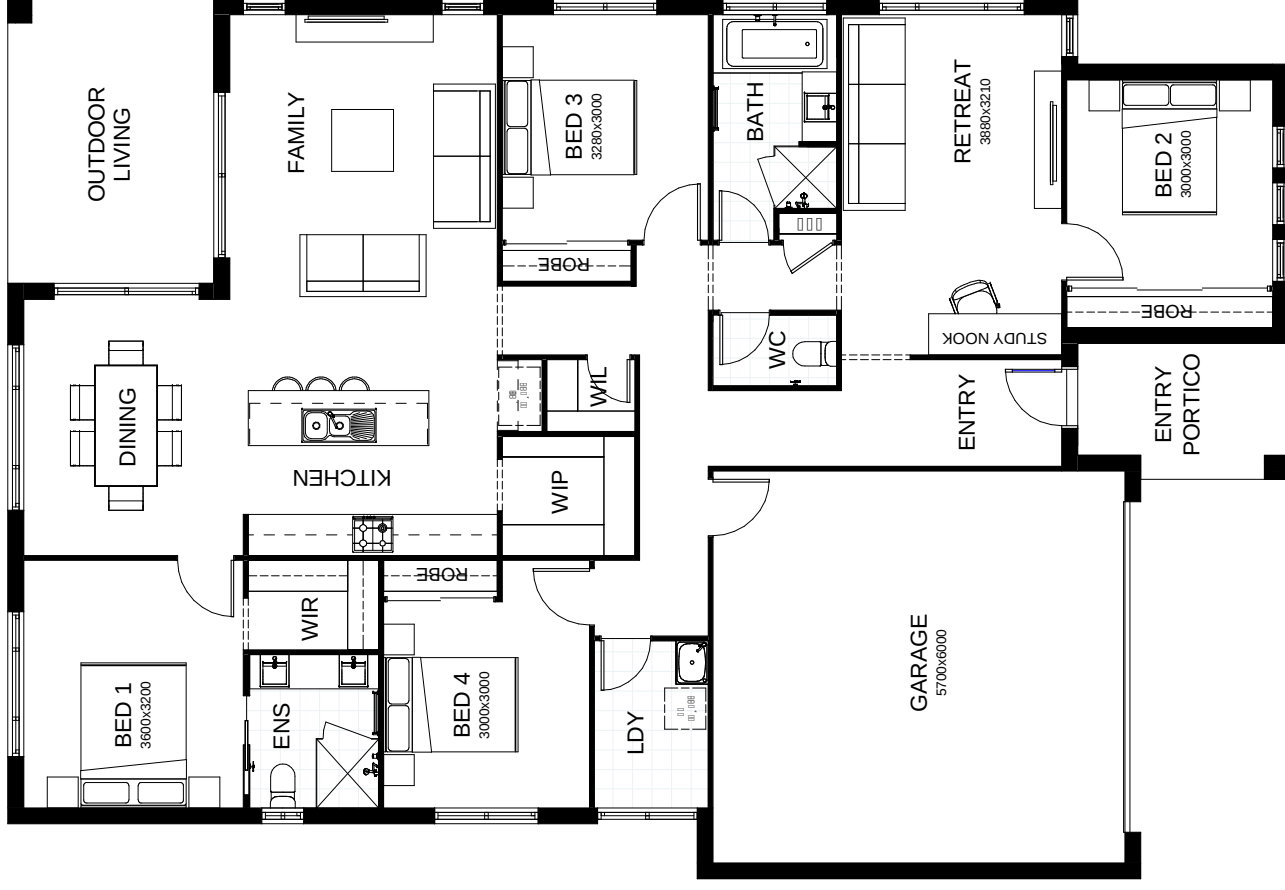
FRONTAGE 14m

EXTERIOR 18.65m x 12.8m

TOTAL FLOOR AREA 215.3m<sup>2</sup>



This document is produced for marketing and illustration purposes and should only be used as a guide. Please note all plans are not to scale, and all images, materials used and inclusions are indicative only. Copyright of Bold Living



*create your dream*

