



AQUILA 325

Be the envy of your friends, living in this ultra-spacious open plan family oriented home. You'll find yourself spending lots of time in the alfresco entertaining area that flows straight out from the integrated living, dining and kitchen space, enjoying the perfect balance of indoor and outdoor life. There's a dedicated media room, and a huge rumpus room upstairs that the kids can make their own. Contact us today to customise the Aquila home to you!

FRONTAGE 13m

EXTERIOR 18.17m x 11.8m

TOTAL FLOOR AREA 325.9m²

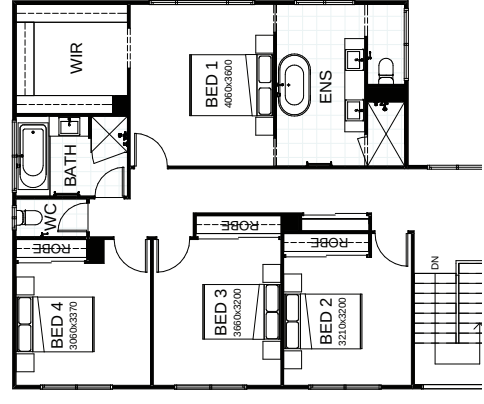
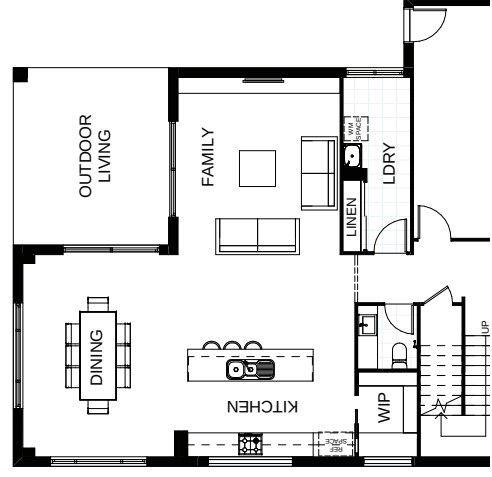
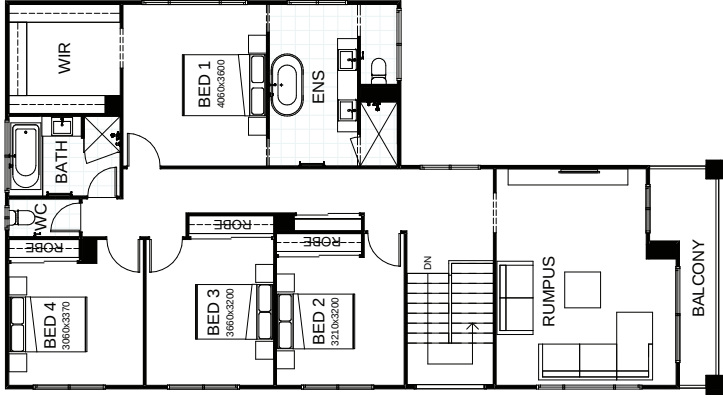


This document is produced for marketing and illustration purposes and should only be used as a guide. Please note all plans are not to scale and all images, materials used and inclusions are indicative only. Copyright of Total Living



AQUILA 325 M

Be the envy of your friends, living in this ultra-spacious open plan family oriented home. You'll find yourself spending lots of time in the alfresco entertaining area that flows straight out from the integrated living, dining and kitchen space, enjoying the perfect balance of indoor and outdoor life. There's a dedicated media room, and a huge rumpus room upstairs that the kids can make their own. Contact us today to customise the



create your dream

