



BOLD LIVING
create your dream

KINMA VALLEY ESTATE DISPLAY HOMES
CAPRI 356 | EMERSON 260

EMERSON 260



BOLD LIVING

create your dream

15 years of building with certainty in Queensland.

15 years ago, Bold Living began building homes across Southeast Queensland with a simple focus – quality, flexibility and certainty.


Since then, we've delivered more than 3,000 homes, refining our systems and pricing to reduce risk and remove surprises for our clients.

Today, we continue to offer guaranteed fixed price contracts, fixed site costs and transparent inclusions – giving Queensland families confidence at every stage of their build.



Capri 356

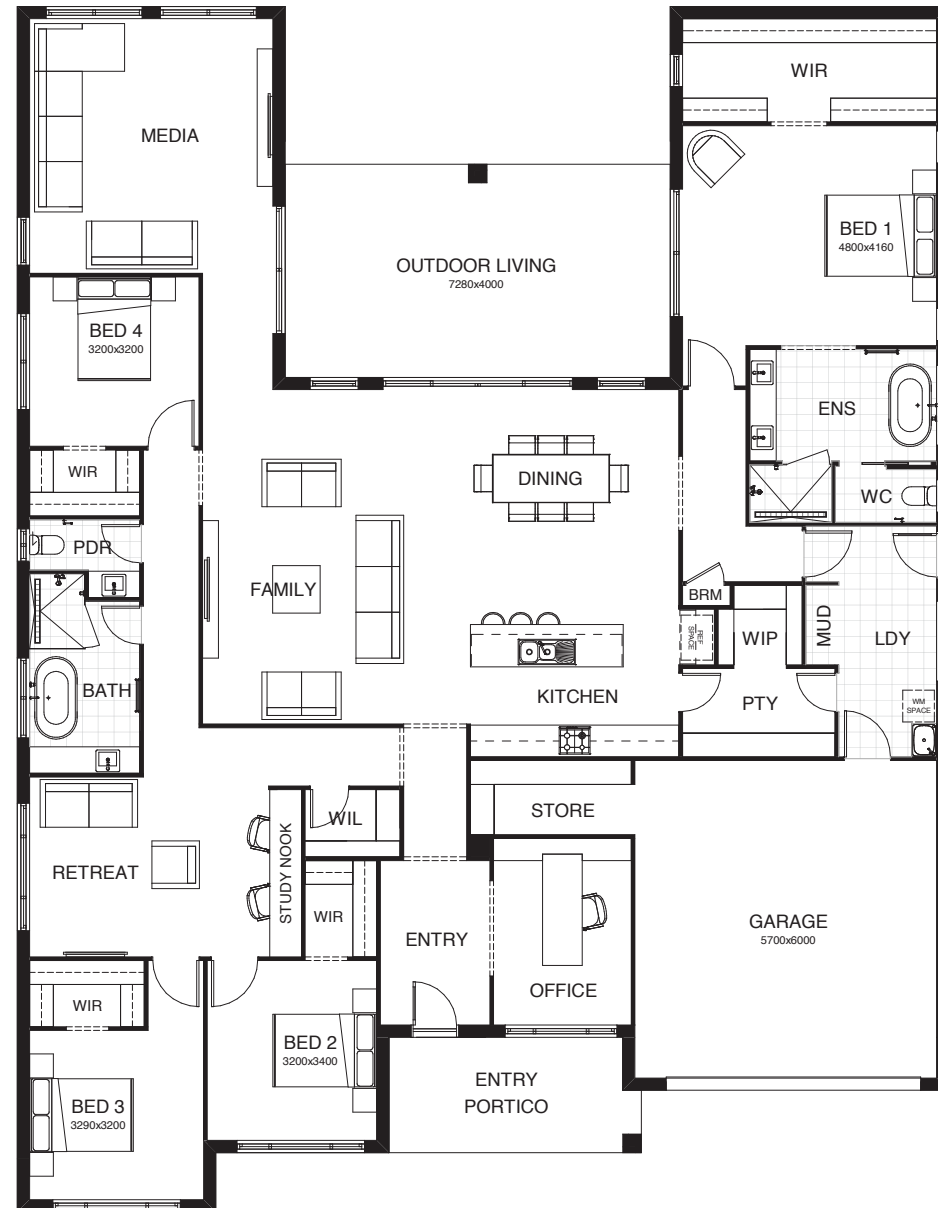
The Capri is where family connection and contemporary comfort come together. Thoughtfully designed around an expansive outdoor living hub, it balances open-plan freedom with intimate retreats and practical spaces. With a private master suite, dedicated office, and generous entertaining zones, the Capri offers effortless flow and everyday comfort, a true expression of modern family living, built to inspire. Contact us today to customise the Capri home to you!

 **FRONTAGE** 20m

 **TOTAL FLOOR AREA** 356.9m²

 **EXTERNAL DIMENSIONS** 22.78m x 17.6m

 4  3  2  2  2



This document is produced for marketing and illustration purposes and should only be used as a guide. Please note all plans are not to scale, and all images, materials used and inclusions are indicative only. © Copyright of Bold Living.



Emerson 260

The Emerson is an intelligently designed family home delivering luxury without compromise. You're spoilt with two generous living spaces, a study and four bedrooms including an impressive master suite. The kitchen, living and dining is located at the heart of the home providing easy access to the rest of the house and a seamless flow directly to the outdoor living space. Contact us today to customise the Emerson home to you!

FRONTAGE	18m	
TOTAL FLOOR AREA	260.6m ²	
EXTERNAL DIMENSIONS	21.51m x 13.75m	

- 4
- 2
- 2
- 1
- 2



This document is produced for marketing and illustration purposes and should only be used as a guide. Please note all plans are not to scale, and all images, materials used and inclusions are indicative only. © Copyright of Bold Living.





We'll build you the house that's all you want in a home.

EMERSON 260



Your dream home is our dream too.





Homes tailored for every life stage.

We understand that every family has unique needs and aspirations. Whether you're a first-time homebuyer, a growing family, an empty nester or an investor, we offer tailored solutions and designs to suit your lifestyle and goals. No matter where you are on your journey, we're here to help you create the perfect home for the next chapter of your life.

FIRST HOME BUYERS

Start your home-ownership journey with us – affordable, stylish options designed to fit your budget and vision.

FAMILIES UPSIZING

Discover spacious, functional homes that grow with your family, crafted for comfort and lasting memories.

ACREAGE

Embrace open space and tranquility with our acreage designs, combining rural charm and modern luxury.

FAMILIES DOWNSIZING

Transition effortlessly into a stylish, manageable space that suits your evolving lifestyle.

KNOCK DOWN & REBUILD

Love your location but need a fresh start? We'll help you transform your site with a new home.

INVESTMENT

Maximise returns with thoughtfully designed, low maintenance investment properties tailored to market demand.





Visit one of our display homes open now across South East Queensland – Brisbane, Sunshine Coast, Gold Coast & Toowoomba.

**HEAD OFFICE &
EVOLVE SELECTION
STUDIO**

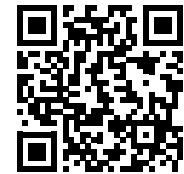
49 Flinders Parade
North Lakes Qld 4509



● NORTH LAKES

● BRISBANE

See our current
display homes!



1800 GO BOLD
boldliving.com.au

BOLD LIVING
create your dream