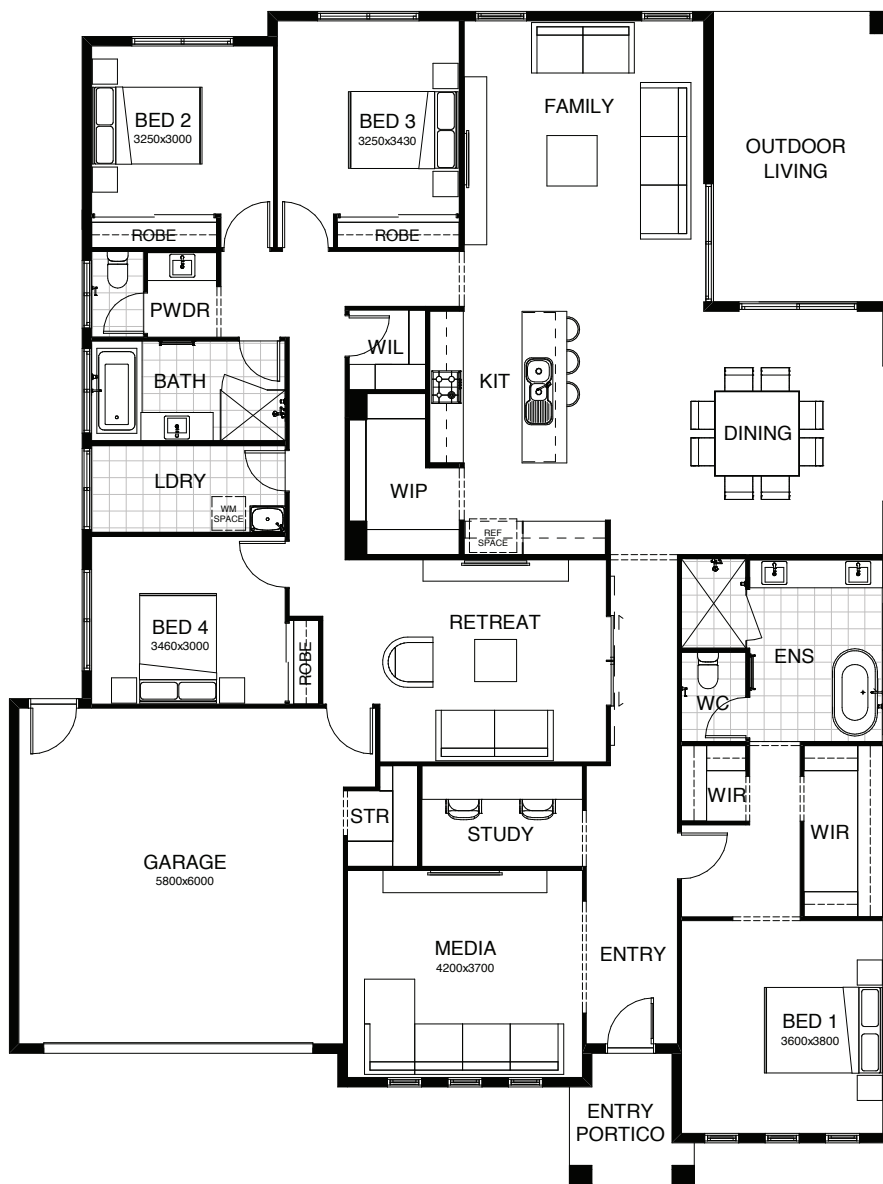


# ELWOOD 289

This clever single level design is one to delight the entire family. Boasting three spacious living areas and four bedrooms including a luxurious master suite with ensuite and walk in robe – there is room for everyone. The kitchen, living and dining form the heart of the home, opening out to the spacious outdoor living space suited perfectly for entertaining. Contact us today to customise the Elwood home to you!



**FRONTAGE** 18m

**EXTERIOR LENGTH** 21.02m

**TOTAL FLOOR AREA** 289.9m<sup>2</sup>

**EXTERIOR WIDTH** 15.78m

4 | 3 | 1 | 2.5 | 1 | 2