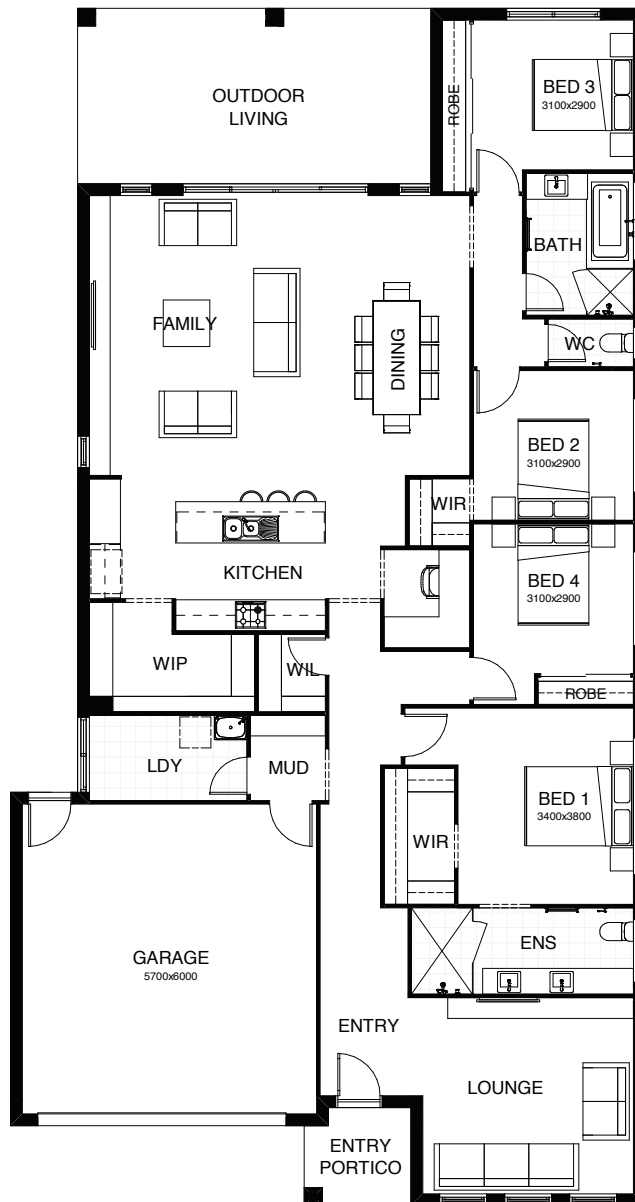


ASHTON 255

The Ashton delivers a stunning 4 bedroom design that ticks all the boxes! You're spoilt with the spacious master suite complete with an ensuite and walk-in robe, and the addition of a private second living space! At the heart of the home an open plan family, dining and kitchen space is featured, all of which opens seamlessly onto an outdoor entertaining area.



FRONTAGE 14m

EXTERIOR LENGTH 23.2m

TOTAL FLOOR AREA 255.4m²

EXTERIOR WIDTH 12.3m

 4 |
  2 |
  1 |
  2 |
  1 |
  2

