



**BOLD
LIVING**

create your dream



NORTH HARBOUR DISPLAY HOMES

ATHENA 351 | ASHTON 255 | SORRENTO 412



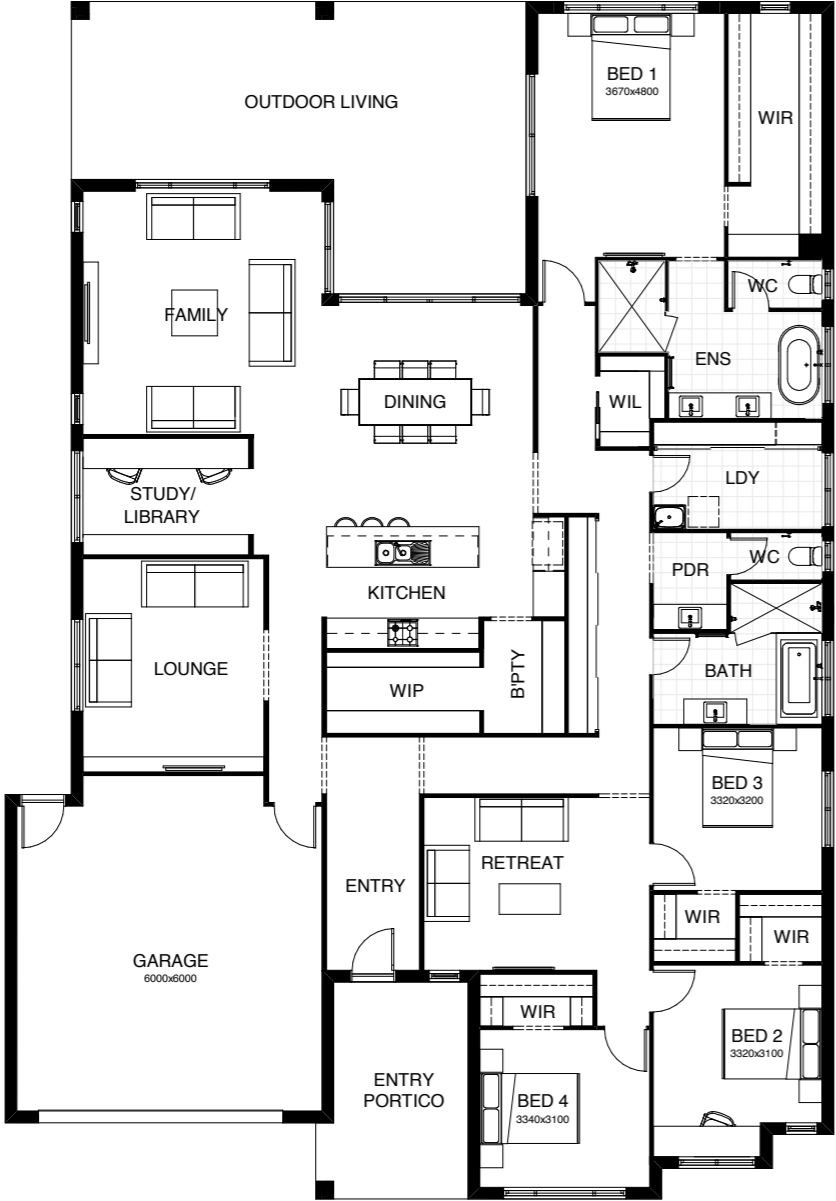
Bold Living builds beautiful homes that bring dreams to life, creating places families will love. Every Bold home makes a unique statement, thanks to contemporary design, attention to detail, flexibility and quality in construction.

As a family owned and operated business, we understand that building your own new home is so much more than choosing a floor plan, colours, bricks and mortar. It's about the experience, and the exciting journey you're embarking on. Creating your dream and a place to enjoy a life that fulfils all desires.

create your dream

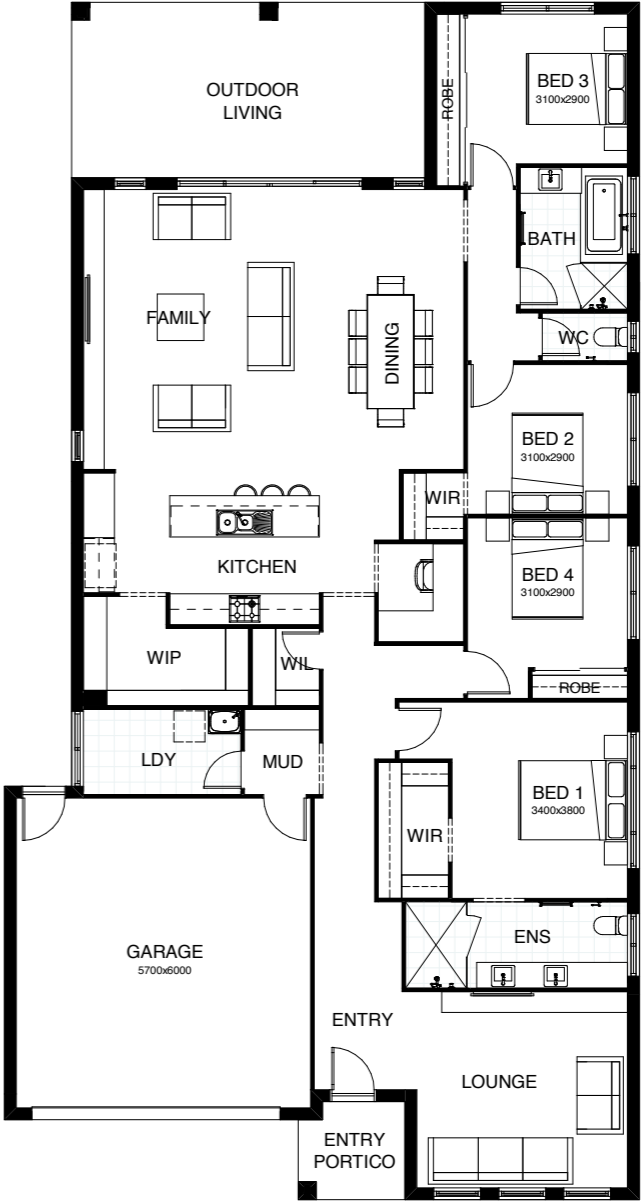
ATHENA 351

Life revolves around the central core of the four bedroom Athena design, with the kitchen, dining and family room all seamlessly connected to the outdoor living and entertaining space. There's a media room to watch your favourite movies, a separate study, a kids' retreat and a generously sized master suite positioned for peace and privacy.



ASHTON 255

The Ashton delivers a stunning 4 bedroom design that ticks all the boxes! You're spoilt with the spacious master suite complete with an ensuite and walk-in robe, and the addition of a private second living space! At the heart of the home an open plan family, dining and kitchen space is featured, all of which opens seamlessly onto an outdoor entertaining area.



OPENING SOON!



FRONTAGE 18m	EXTERIOR LENGTH 23.56m
TOTAL FLOOR AREA 351.7m ²	EXTERIOR WIDTH 16.3m
4 3 1 2.5 1 2	

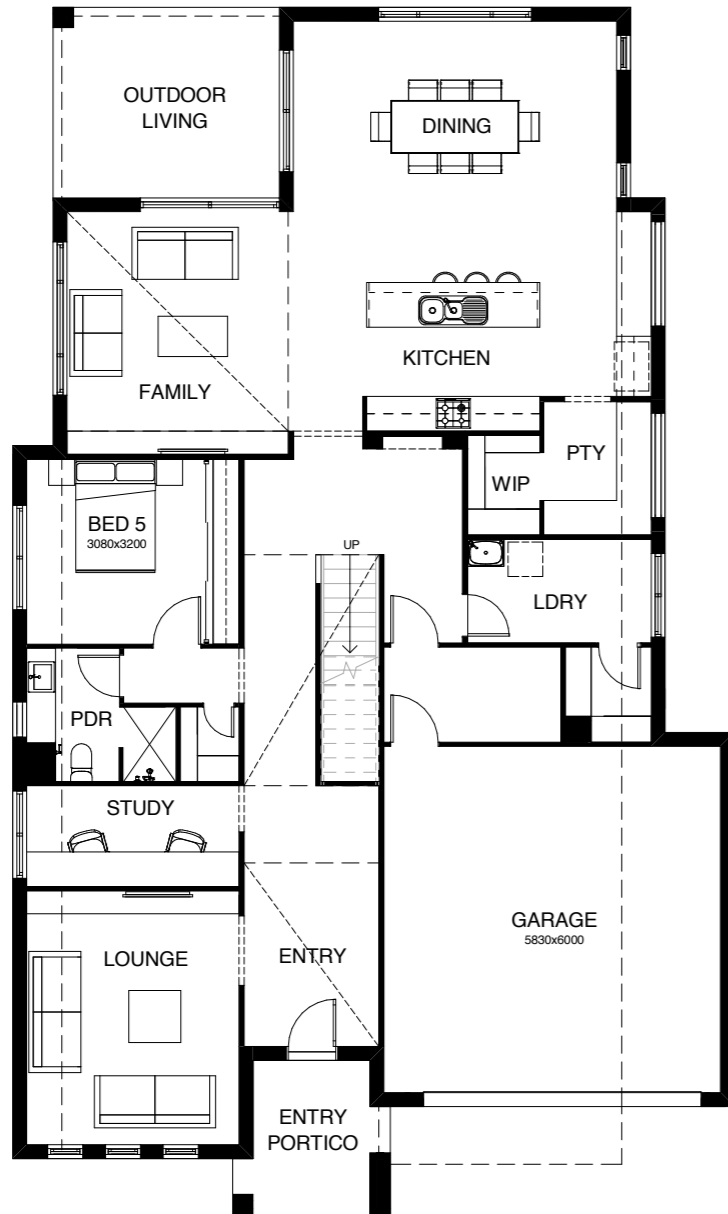


FRONTAGE 14m	EXTERIOR LENGTH 23.2m
TOTAL FLOOR AREA 255.4m ²	EXTERIOR WIDTH 12.3m
4 2 1 2 1 2	

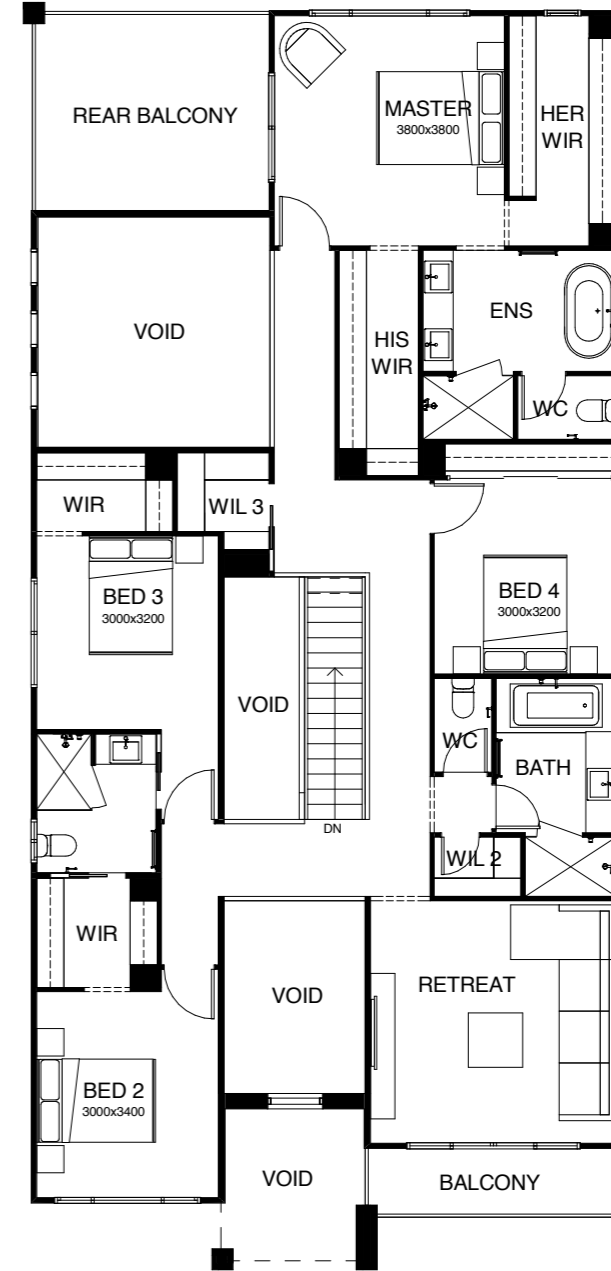
SORRENTO 412

Ground Level

A contemporary masterpiece, this home is perfectly designed for the gracious Queensland lifestyle. Coming in through the imposing entry door, you're welcomed by light-filled voids, before moving on to a relaxed sitting room, the fifth bedroom with private ensuite and study space. The open plan kitchen, with butler's pantry, is at the centre of the residence, looking out through bi-fold doors to the expansive outdoor living space.



Upper Level



OPENING SOON!

FRONTAGE 14m

EXTERIOR LENGTH 20.91m

TOTAL FLOOR AREA 412.1m²

EXTERIOR WIDTH 12.5m

5 | 3 | 1 | 4 | 1 | 2

This document is produced for marketing and illustration purposes and should only be used as a guide. Please note all plans are not to scale, and all images, materials used and inclusions are indicative only. Copyright of Bold Living.

Create your dream at
EVOLVE SELECTION STUDIO



At Evolve, everything you need to create your dream and tell your story is all in one place. We have taken interior design and home styling to an entirely new level, creating the most innovative, comprehensive and convenient display of design trends.

Enter a world of opportunity, showcasing many of Australia's leading brands in bath and kitchen fittings, appliances, building materials, floor coverings and much more. Our experienced team of interior designers is at hand to guide you through to creating your ultimate dream.

Relax and take a break at our onsite café, leave the kids in our dedicated kids' corner. We invite you to explore endless opportunities at Evolve. Open six days a week and no appointment is necessary.



1800 GO BOLD

49 Flinders Pde, North Lakes Q 4509
boldliving.com.au

create your dream