

BOLD LIVING

create your dream



NORTH HARBOUR

ATHENA 351 | ASHTON 255 | SORRENTO 375

Ashton 255



BOLD LIVING

create your dream

Bold Living builds beautiful homes that bring dreams to life, creating places families will love. Every Bold home makes a unique statement, thanks to contemporary design, attention to detail, flexibility and quality in construction.

As a family owned and operated business, we understand that building your own new home is so much more than choosing a floor plan, colours, bricks and mortar. It's about the experience, and the exciting journey you're embarking on. Creating your dream and a place to enjoy a life that fulfils all desires.

ATHENA 351

Life revolves around the central core of the four bedroom Athena design, with the kitchen, dining and family room all seamlessly connected to the outdoor living and entertaining space. There's a media room to watch your favourite movies, a separate study, a kids' retreat and a generously sized master suite positioned for peace and privacy.

FRONTAGE	18m
TOTAL FLOOR AREA	351.7m ²
EXTERIOR LENGTH	23.56m
EXTERIOR WIDTH	16.3m

 4 |  3 |  2.5 |  1 |  2

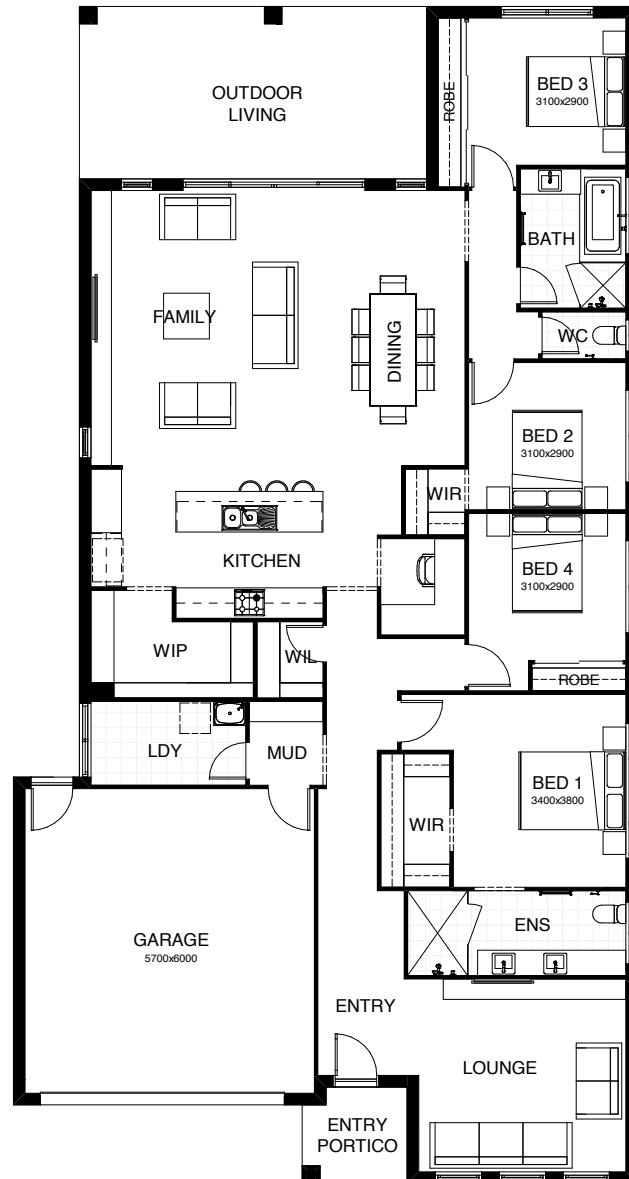


This document is produced for marketing and illustration purposes and should only be used as a guide. Please note all plans are not to scale, and all images, materials used and inclusions are indicative only. © Copyright of Bold Living.



ASHTON 255

The Ashton delivers a stunning 4 bedroom design that ticks all the boxes! You're spoilt with the spacious master suite complete with an ensuite and walk-in robe, and the addition of a private second living space! At the heart of the home an open plan family, dining and kitchen space is featured, all of which opens seamlessly onto an outdoor entertaining area.



FRONTAGE	14m
TOTAL FLOOR AREA	255.4m ²
EXTERIOR LENGTH	23.2m
EXTERIOR WIDTH	12.3m

 4 |
  2 |
  2 |
  1 |
  2



SORRENTO 375

A contemporary masterpiece, this home is perfectly designed for the gracious Queensland lifestyle. Coming in through the imposing entry door, you're welcomed by light-filled voids, before moving on to a relaxed sitting room, the fifth bedroom with private ensuite and study space. The open plan kitchen, with butler's pantry, is at the centre of the residence, looking out through bi-fold doors to the expansive outdoor living space.

FRONTAGE	14m
TOTAL FLOOR AREA	375.6m ²
EXTERIOR LENGTH	19.23m
EXTERIOR WIDTH	12.3m

 4 |
  3 |
  2.5 |
  1 |
  2



This document is produced for marketing and illustration purposes and should only be used as a guide. Please note all plans are not to scale, and all images, materials used and inclusions are indicative only. © Copyright of Bold Living.







We'll build you the house that's all you want in a home.

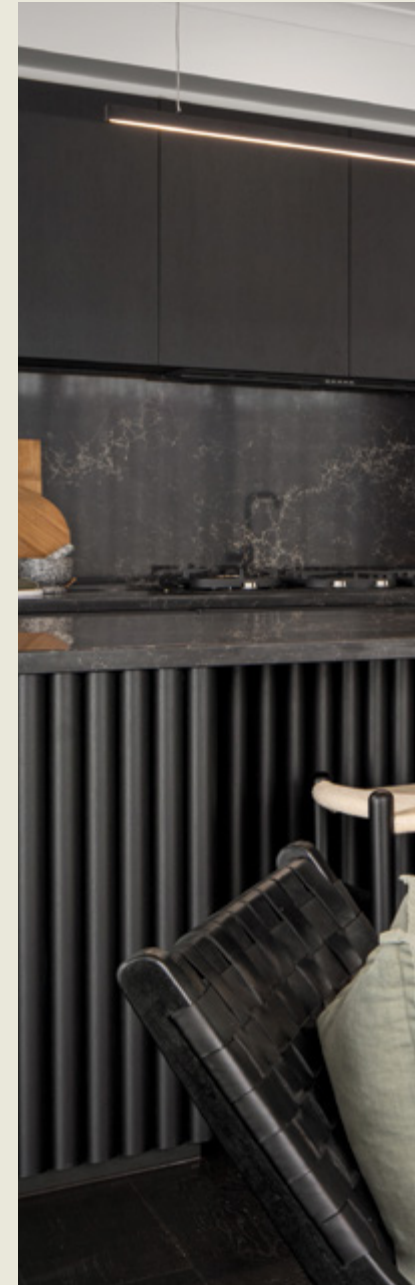




Sorrento 375



Your dream home is our dream too.







Create your dream at
EVOLVE SELECTION STUDIO

At Evolve, everything you need to create your dream and tell your story is all in one place. We have taken interior design and home styling to an entirely new level, creating the most innovative, comprehensive and convenient display of design trends.

Enter a world of opportunity, showcasing many of Australia's leading brands in bath and kitchen fittings, appliances, building materials, floor coverings and much more. Our experienced team of interior designers is at hand to guide you through to creating your ultimate dream.

Relax and take a break at our onsite café, leave the kids in our dedicated kids' corner. We invite you to explore endless opportunities at Evolve, 6 days a week, no appointment needed!



Bold Living Display Homes are now open across South East Queensland – from Brisbane, to the Sunshine Coast, to the Gold Coast & Toowoomba.

**BOLD LIVING
HEADQUARTERS &
EVOLVE SELECTION STUDIO**

49 Flinders Pde,
North Lakes Q 4509



SEE OUR CURRENT
DISPLAY HOMES!



1800 GO BOLD

create your dream

boldliving.com.au