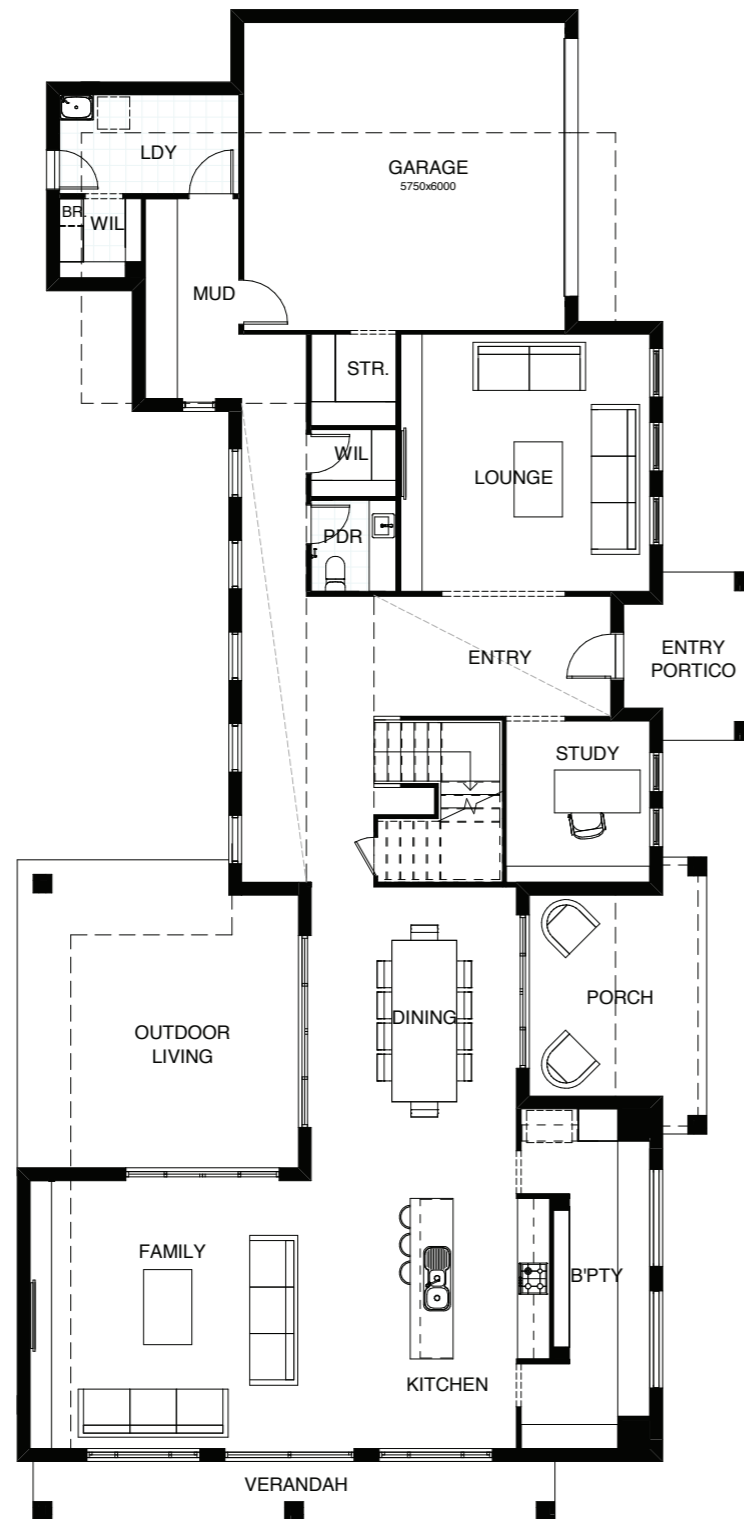


ASPEN 528

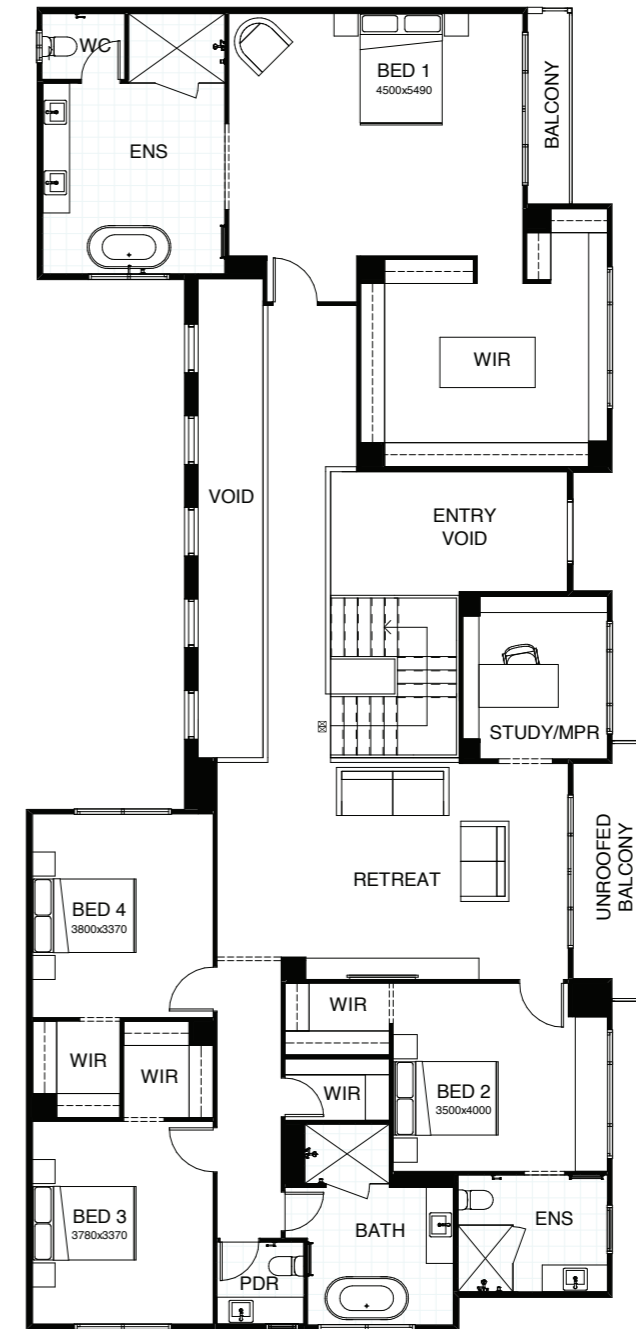
Ground Level

Family, friends, neighbours – there’s room to host everyone in this exciting four bedroom contemporary home. Imagine enjoying its multiple living areas including a huge outdoor entertaining space, integrated family room/ dining areas and a kitchen to covet, with a must-have butler’s pantry.

There’s a separate formal lounge, an upstairs retreat and balcony, plus two studies – feel free to use one as a multi-purpose room.



Upper Level



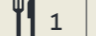


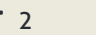


FRONTAGE 29m

EXTERIOR LENGTH 13.74m

TOTAL FLOOR AREA 528.2m²

EXTERIOR WIDTH 28.2m

 4 |
  3 |
  1 |
  3.5 |
  2 |
  2

This document is produced for marketing and illustration purposes and should only be used as a guide. Please note all plans are not to scale, and all images, materials used and inclusions are indicative only. Copyright of Bold Living.