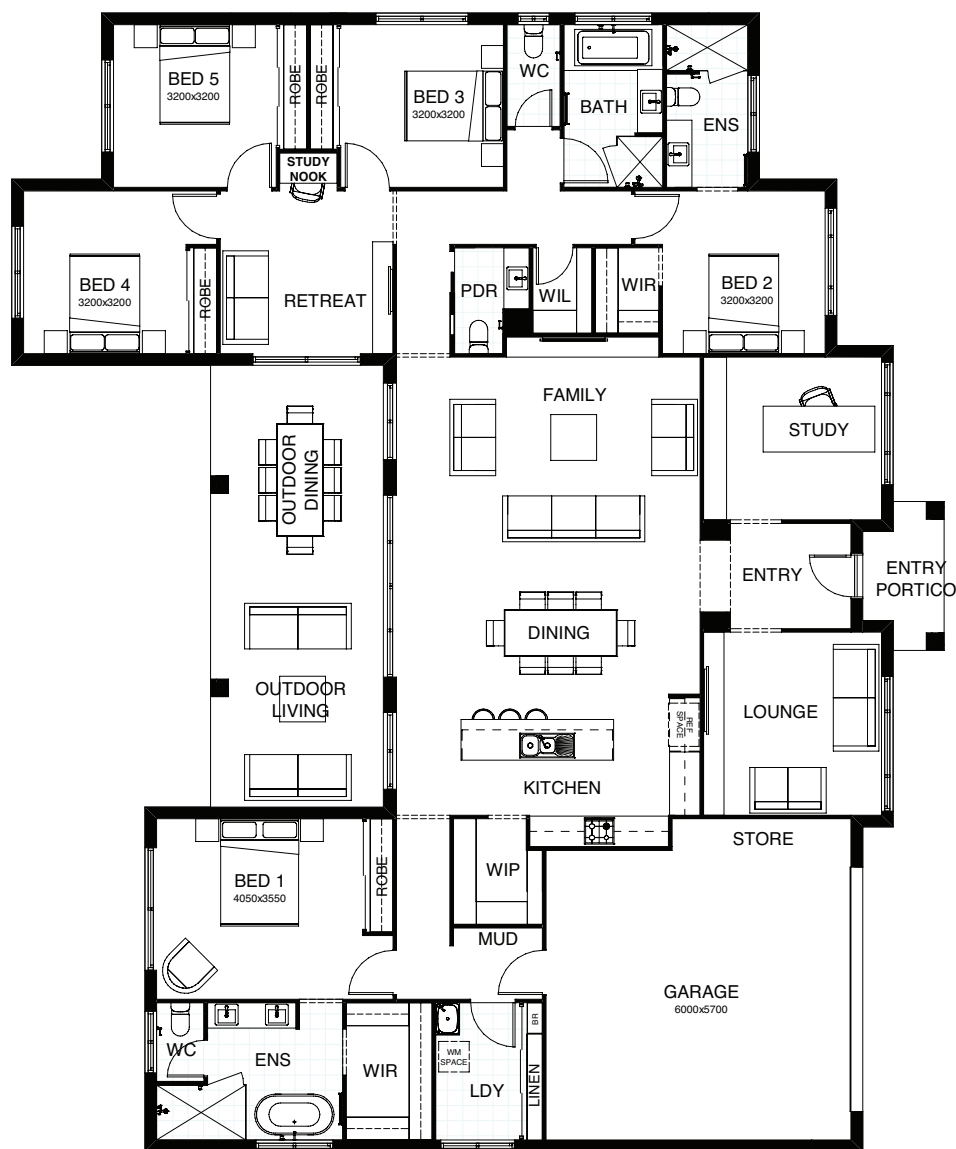


BALWYN 317

This impressive residence incorporates every desirable luxury with expansive contemporary style! All 5 bedrooms include roomy robes, while the master suite, in its own private wing, boasts two. The stylishly appointed kitchen, dining and family rooms form the central hub, interacting directly with the grand scale alfresco entertaining space. There's a spacious lounge, plus a large study and a study nook. This is light, bright, fabulous family living!



FRONTAGE 26.5m

EXTERIOR LENGTH 18.34m

TOTAL FLOOR AREA 317.8m²

EXTERIOR WIDTH 22.4m

5 | 3 | 1 | 4 | 2 | 2