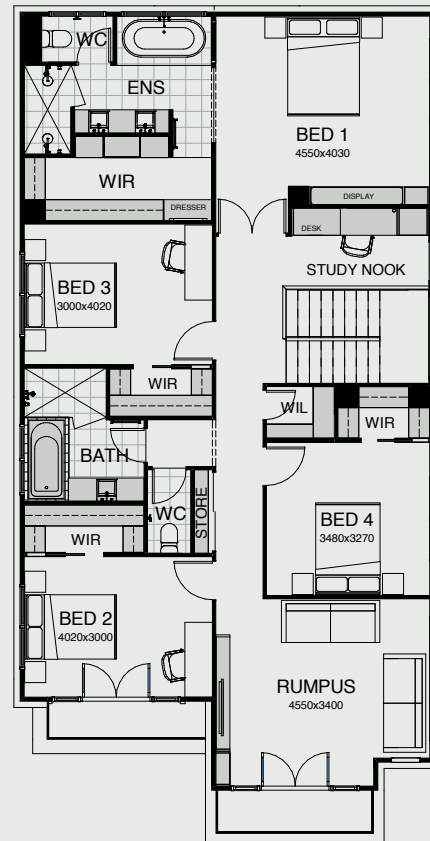
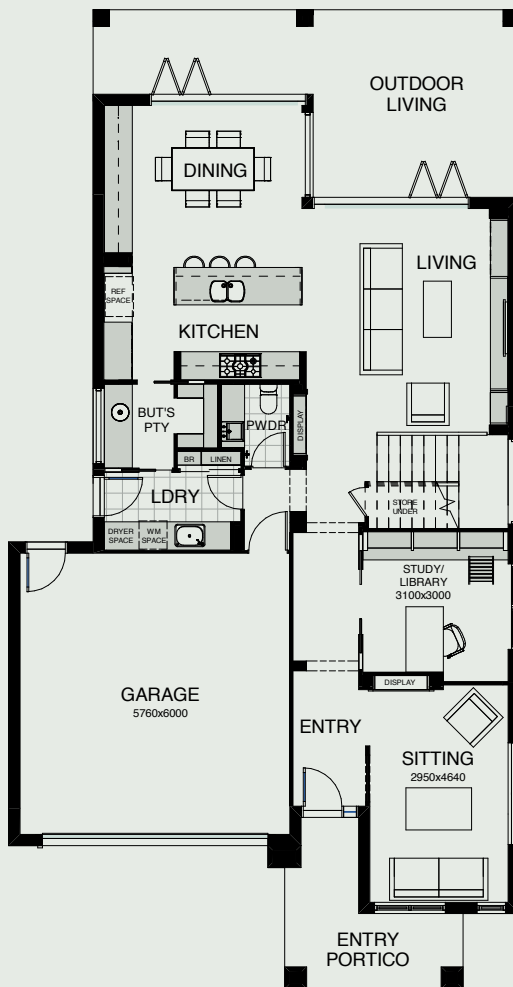


# ZEUS 333

The best of contemporary architecture combines with intelligent design thinking in this two storey home. Four bedrooms, including a grand master suite with a massive walk-in robe, are upstairs. There's also a well-placed kids' retreat. Downstairs there's a large study, a walk-in pantry and integrated open plan living spaces tempting you out to the alfresco area.



FRONTAGE	12.5m
EXTERIOR LENGTH	20.9m
EXTERIOR WIDTH	10.9m
TOTAL FLOOR AREA	345.2m <sup>2</sup>



4 | 3 | 1 | 2.5 | 1 | 2

*create your dream*

For further information, please visit [www.boldliving.com.au](http://www.boldliving.com.au)

