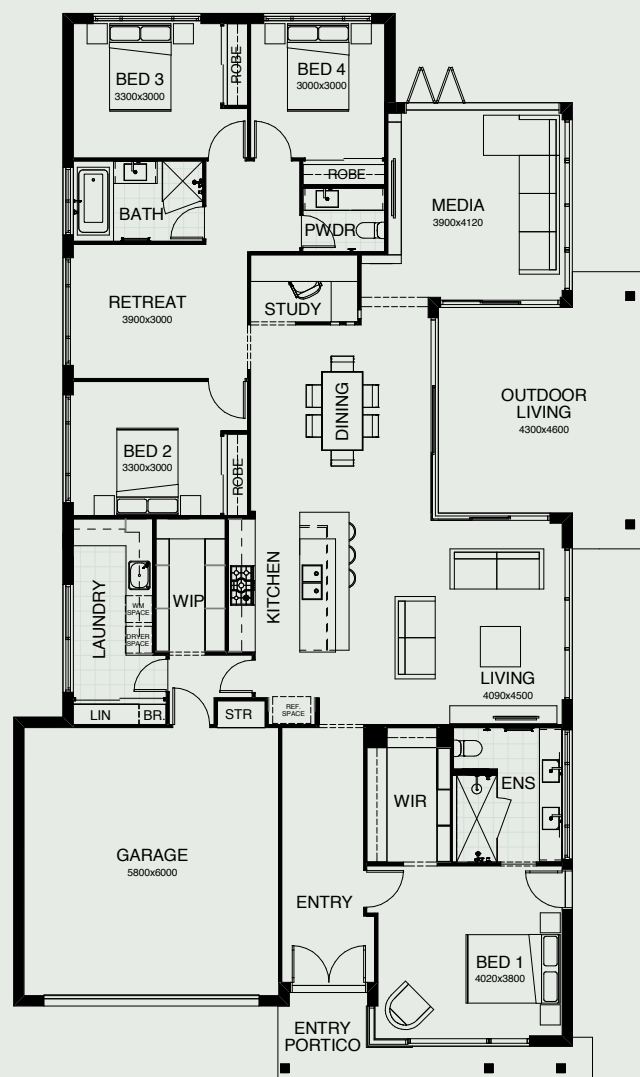


NEWPORT 28

A superbly spacious interpretation of family living all on one level, this floor plan has it all: four bedrooms, including master suite with walk-in robe, children's rooms grouped around a separate retreat, media room and private study. Key to it all is the open plan living, kitchen and dining space, connecting seamlessly with the expansive alfresco living area.



FRONTAGE	12.5m
EXTERIOR LENGTH	23.7m
EXTERIOR WIDTH	12.5m
TOTAL FLOOR AREA	270.9m ²



4 |
 3 |
 1 |
 2.5 |
 1 |
 2

create your dream

For further information, please visit www.boldliving.com.au

