



BOLD
LIVING

create your dream

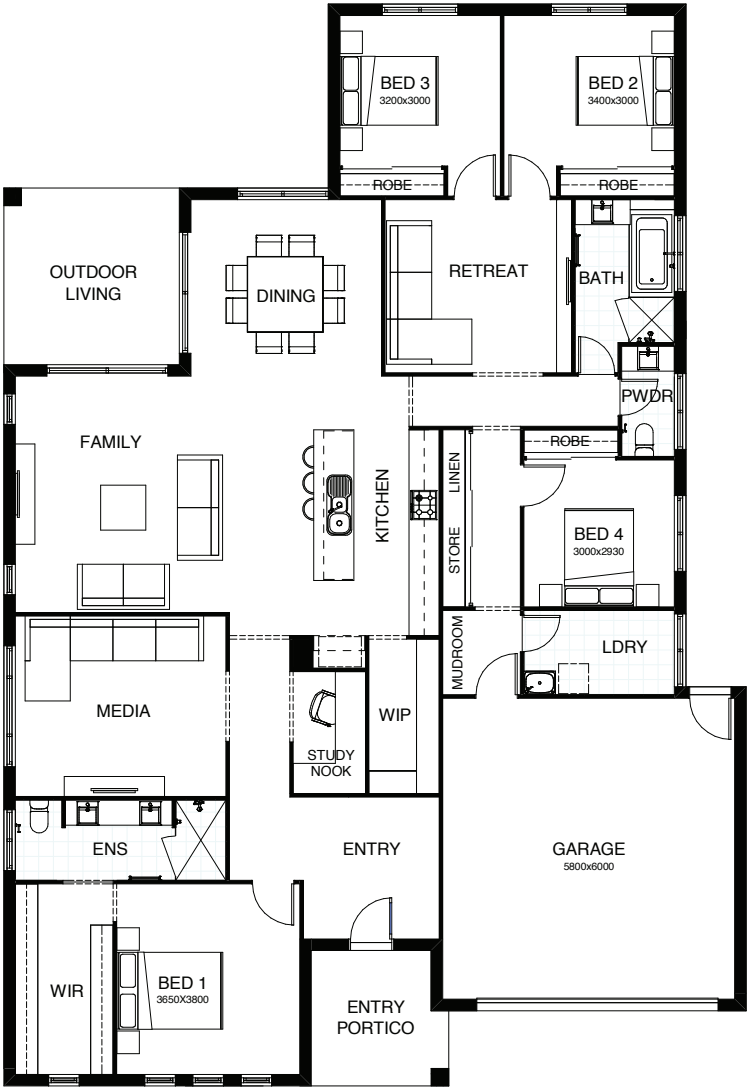


PROVIDENCE DISPLAY HOMES

ARDANA 270 | ATHENA 349 | SOPHIA M 22 | STOCKHOLM 270

ARDANA 270

Light, airy, open plan living all on one level! Clever design means this stunning home will suit everyone in your family. A large alfresco space is the perfect place to entertain and the well designed kitchen makes it easy. There's a separate media room, and parents can retreat to the privacy of their large master bedroom suite, located well away from the childrens' rooms.



FRONTAGE 16m

EXTERIOR LENGTH 21.57m

TOTAL FLOOR AREA 270.3m²

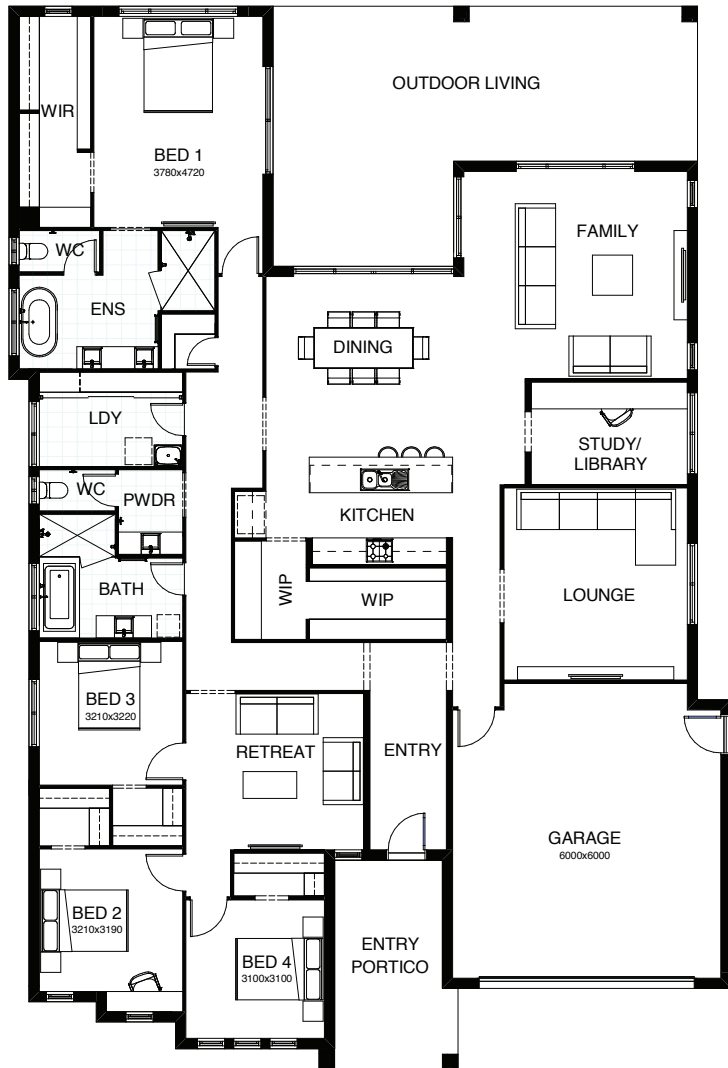
EXTERIOR WIDTH 14.8m

4 | 3 | 1 | 2.5 | 1 | 2



ATHENA 349

Life revolves around the central core of the four bedroom Athena design, with the kitchen, dining and family room all seamlessly connected to the outdoor living and entertaining space. There's a media room to watch your favourite movies, a separate study, a kids' retreat and a generously sized master suite positioned for peace and privacy.



FRONTAGE 17.4m

EXTERIOR LENGTH 23.8m

TOTAL FLOOR AREA 349.2m²

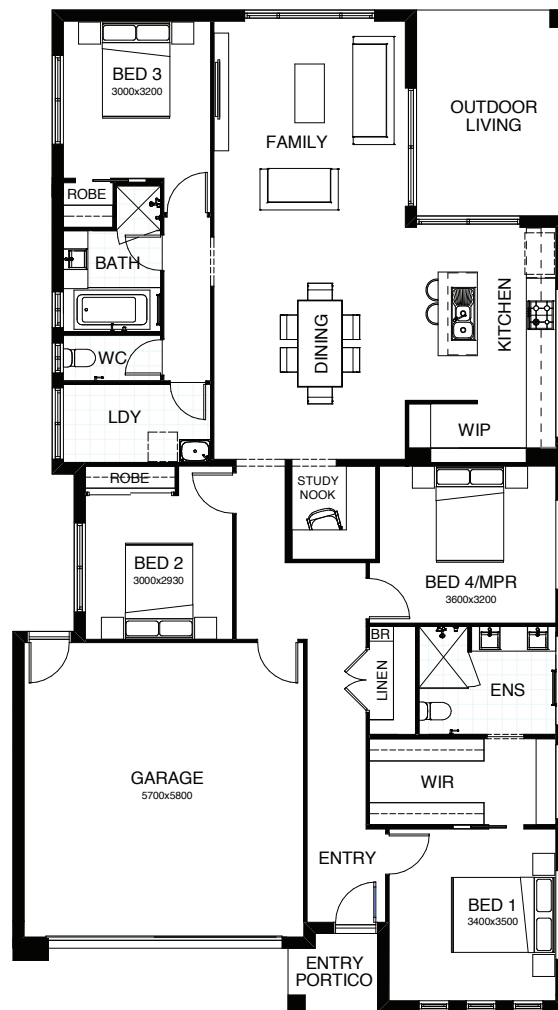
EXTERIOR WIDTH 16.16m

4 |
 3 |
 1 |
 2.5 |
 1 |
 2



SOPHIA M 22

Everything essential is included in this smart single level design, from the multi-purpose room, perfect for relaxing, to the open plan family, dining and kitchen space at the heart of the home – connecting directly with the outdoor entertaining area. There's also a separate study, and the master bedroom is complete with ensuite and walk-in robe.



FRONTAGE 12.5m

EXTERIOR LENGTH 20.43m

TOTAL FLOOR AREA 212m²

EXTERIOR WIDTH 11.3m



STOCKHOLM 270

Fabulous family living is the hallmark of this stunning four bedroom design. Upstairs is dedicated to private time – the master suite with an integrated private space where parents can unwind, adjoined by a large retreat and a convenient study nook. Downstairs the generously-sized media room is at the front of the house, there's a separate study, and the well-designed kitchen, dining and living area flows seamlessly out to the entertaining space at the rear.



FRONTAGE 12.5m

EXTERIOR LENGTH 16.15m

TOTAL FLOOR AREA 270.7m²

EXTERIOR WIDTH 11.3m





At Evolve, everything you need to create your dream and tell your story is all in one place. We have taken interior design and home styling to an entirely new level, creating the most innovative, comprehensive and convenient display of design trends.

Enter a world of opportunity, showcasing many of Australia's leading brands in bath and kitchen fittings, appliances, building materials, floor coverings and much more.

Our experienced team of interior designers is at hand to guide you through to creating your ultimate dream.

Relax and take a break at our onsite café, leave the kids in our dedicated kids' corner. We invite you to explore endless opportunities at Evolve 7 days a week.

create your *style*



OPEN 7 DAYS
NO APPOINTMENT NEEDED

THREE BIG BOLD WINS

2019 HIA DISPLAY HOME OF THE YEAR AND MORE

We're thrilled to have celebrated three wins at the
2019 HIA Sunshine Coast Housing Awards.

Our stunning Kensington 327 on display at Caloundra was
awarded Best Display Home in its respective category as well
as Display Home of the Year.

Clever and ingeniously zoned, our Felix 168 also on display at
Caloundra won the Affordable Housing Award.

SMARTLIVING BY BOLD



AFFORDABLE HOME INCLUSIONS

Whether you're just starting out, a family with growing youngsters or a savvy investor, Smart Living provides a range of clever designs that combines livability and quality with affordability. We've hand picked the stylish turn-key inclusions in this collection so that all the hard work in your new Bold home is done for you, long before you move in – right down to the fine details. It couldn't be easier or more convenient. And our high standards of design and finish mean you'll be so proud to show it off.

contemporaryliving BY BOLD



INSPIRING HOME INCLUSIONS

We know you'd love your new dream home to be clean-lined, modern, comfortable and affordable. Our Contemporary Living collection is all that and more. We're proud to present a range of inspiring living environments you'd be delighted to call your own. And all complete with an extensive array of 'must have' features and fittings – high quality, forever stylish, yet budget friendly. It's all about making your home perfect for you, ensuring it's complete with the things that really matter.

SABALIVING BY BOLD



LUXURY HOME INCLUSIONS

The individual, original world of Saba Living was created for you. You have an unerring eye for what you love, what speaks to your heart and soul. When it comes to building the new home that fully expresses your dreams, your standards are unwavering. We turn the everyday event of building into a magnificent bespoke experience. Working with you to create a home that lives and breathes your individuality and ideas.

VISIT A BOLD LIVING DISPLAY CENTRE

BAHRS SCRUB BROOKHAVEN ESTATE

BALLARAT 215
& SOPHIA 22

Menora Road
Bahrs Scrub Q 4207

CALOUNDRA AURA ESTATE

FELIX 168
& KENSINGTON 327

Leslie Crescent
Caloundra Q 4551

BURPENGARY NORTH HARBOUR ESTATE

ATHENA 349
& SOPHIA M 22

Brook Crescent,
Burpengary Q 4505

GREENBANK EVERLEIGH ESTATE

SOPHIA 253
& NEWPORT 297

Olive Avenue,
Greenbank Q 4124

NEWPORT

NEWPORT 28
& ZEUS 333

Spinnaker Boulevard
Newport Q 4020

NORTH LAKES

NEWPORT 216
& STOCKHOLM 267

Attenborough Circuit
North Lakes Q 4509

PALLARA

SOPHIA 240 &
NEWMARKET 277

2 Brookbent Road
Pallara Q 4110

SOUTH RIPLEY

PROVIDENCE ESTATE

ARDANA 270, ATHENA 349,
SOPHIA M 22, STOCKHOLM 270

Soul Crescent
Ripley Q 4306

UPPER COOMERA

FORSHORE ESTATE

ELWOOD 254
KENSINGTON 367

Forresdale Street
(off Foxwell Road)
Upper Coomera Q 4209

UPPER KEDRON

ELLENDALE ESTATE

STOCKHOLM M 304

Canvey Road
Upper Kedron Q 4055

CALOUNDRA



BURPENGARY



NEWPORT



NORTH LAKES

UPPER
KEDRON



PALLARA

SOUTH
RIPLEY



BAHRS
SCRUB

GREENBANK

UPPER
COOMERA



1800 GO BOLD

49 Flinders Pde, North Lakes Q 4509

www.boldliving.com.au

create your dream