



BOLD
LIVING

create your dream

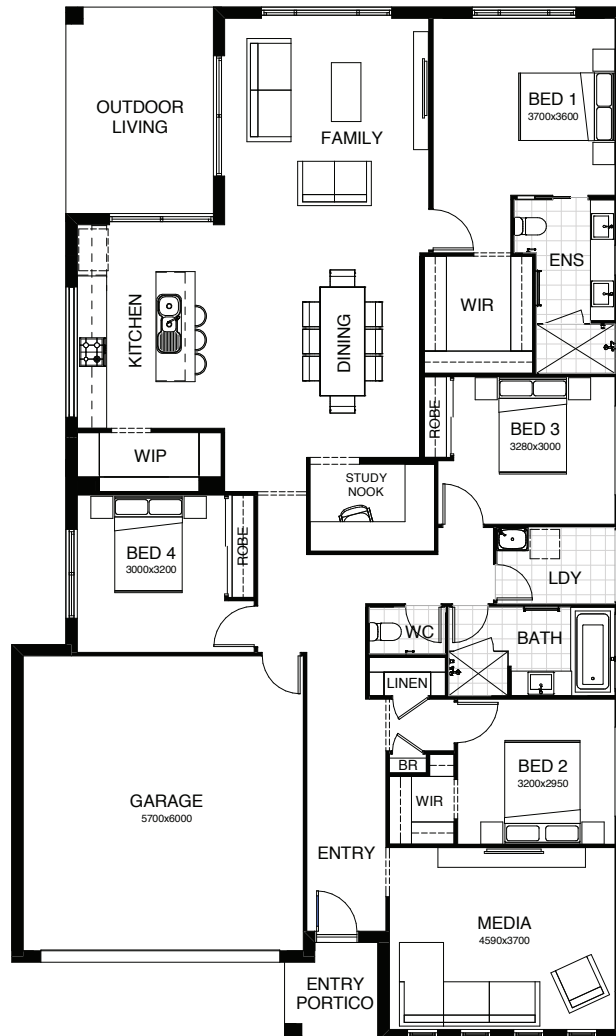


PALLARA DISPLAY HOMES

SOPHIA 240 | NEWMARKET 227

SOPHIA 240

Everything essential is included in this smart single level design, from the multi-purpose room, perfect for relaxing, to the open plan family, dining and kitchen space at the heart of the home – connecting directly with the outdoor entertaining area. There's also a separate study, and the master bedroom is complete with ensuite and walk-in robe.



FRONTAGE 13.7m

EXTERIOR LENGTH 21.03m

TOTAL FLOOR AREA 239.7m²

EXTERIOR WIDTH 12.5m

4 Beds | 2 Living Areas | 1 Kitchen | 2 Bathrooms | 1 Study | 2 Garages



NEWMARKET 227

This floor plan is thoughtful design at its best, perfect to make the most of a narrow block. The second level is all about the bedrooms, with double rooms for the kids, family bathroom and study nook. The impressive master suite includes a walk-in robe, en suite and parents' retreat. The ground floor is laid out for open living and hospitable outdoor entertaining. There's also another study nook and a large media room.



FRONTAGE 10m

EXTERIOR LENGTH 20.77m

TOTAL FLOOR AREA 227.8m²

EXTERIOR WIDTH 8.8m

4 | 3 | 1 | 2.5 | 2 | 2





At Evolve, everything you need to create your dream and tell your story is all in one place. We have taken interior design and home styling to an entirely new level, creating the most innovative, comprehensive and convenient display of design trends.

Enter a world of opportunity, showcasing many of Australia's leading brands in bath and kitchen fittings, appliances, building materials, floor coverings and much more.

Our experienced team of interior designers is at hand to guide you through to creating your ultimate dream.

Relax and take a break at our onsite café, leave the kids in our dedicated kids' corner. We invite you to explore endless opportunities at Evolve 7 days a week.

create your *style*



OPEN 7 DAYS
NO APPOINTMENT NEEDED

THREE BIG BOLD WINS

2019 HIA DISPLAY HOME OF THE YEAR AND MORE

We're thrilled to have celebrated three wins at the
2019 HIA Sunshine Coast Housing Awards.

Our stunning Kensington 327 on display at Caloundra was
awarded Best Display Home in its respective category as well
as Display Home of the Year.

Clever and ingeniously zoned, our Felix 168 also on display at
Caloundra won the Affordable Housing Award.

SMARTLIVING BY BOLD



AFFORDABLE HOME INCLUSIONS

Whether you're just starting out, a family with growing youngsters or a savvy investor, Smart Living provides a range of clever designs that combines livability and quality with affordability. We've hand picked the stylish turn-key inclusions in this collection so that all the hard work in your new Bold home is done for you, long before you move in – right down to the fine details. It couldn't be easier or more convenient. And our high standards of design and finish mean you'll be so proud to show it off.

contemporaryliving BY BOLD



INSPIRING HOME INCLUSIONS

We know you'd love your new dream home to be clean-lined, modern, comfortable and affordable. Our Contemporary Living collection is all that and more. We're proud to present a range of inspiring living environments you'd be delighted to call your own. And all complete with an extensive array of 'must have' features and fittings – high quality, forever stylish, yet budget friendly. It's all about making your home perfect for you, ensuring it's complete with the things that really matter.

SABALIVING BY BOLD



LUXURY HOME INCLUSIONS

The individual, original world of Saba Living was created for you. You have an unerring eye for what you love, what speaks to your heart and soul. When it comes to building the new home that fully expresses your dreams, your standards are unwavering. We turn the everyday event of building into a magnificent bespoke experience. Working with you to create a home that lives and breathes your individuality and ideas.

