



**BOLD
LIVING**

create your dream

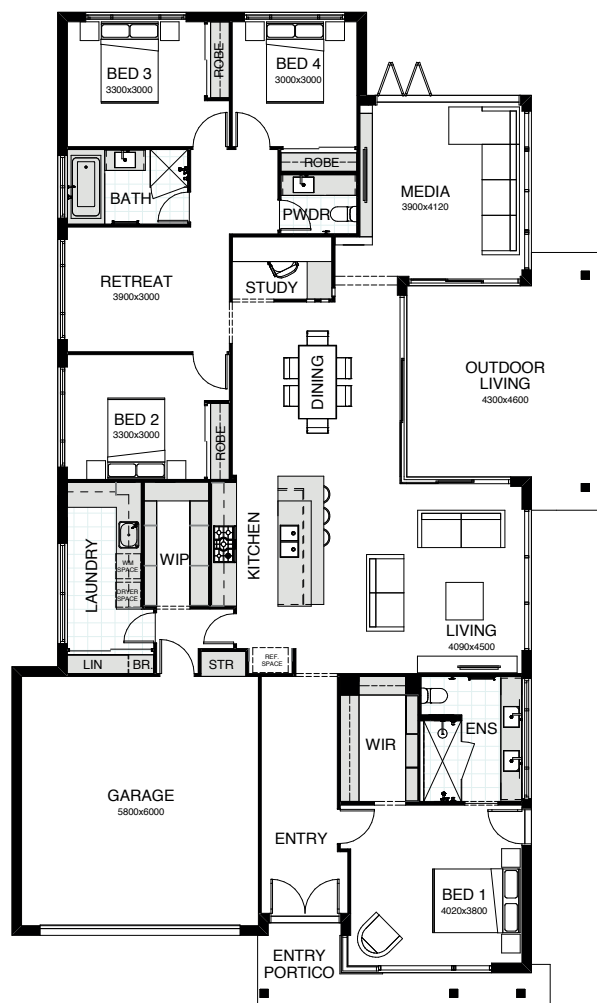


NEWPORT DISPLAY HOMES

NEWPORT 28 | ZEUS 333

NEWPORT 28

A superbly spacious interpretation of family living all on one level, this floor plan has it all: four bedrooms, including master suite with walk-in robe, children's rooms grouped around a separate retreat, media room and private study. Key to it all is the open plan living, kitchen and dining space, connecting seamlessly with the expansive alfresco living area.



FRONTAGE 12.5m

EXTERIOR LENGTH 23.7m

TOTAL FLOOR AREA 270.9m²

EXTERIOR WIDTH 12.5m



ZEUS 333

The best of contemporary architecture combines with intelligent design thinking in this two storey home. Four bedrooms, including a grand master suite with a massive walk-in robe, are upstairs. There's also a well-placed kids' retreat. Downstairs there's a large study, a walk-in pantry and integrated open plan living spaces tempting you out to the alfresco area.



FRONTAGE 12.5m

EXTERIOR LENGTH 20.9m

TOTAL FLOOR AREA 345.2m²

EXTERIOR WIDTH 10.9m





At Evolve, everything you need to create your dream and tell your story is all in one place. We have taken interior design and home styling to an entirely new level, creating the most innovative, comprehensive and convenient display of design trends.

Enter a world of opportunity, showcasing many of Australia's leading brands in bath and kitchen fittings, appliances, building materials, floor coverings and much more.

Our experienced team of interior designers is at hand to guide you through to creating your ultimate dream.

Relax and take a break at our onsite café, leave the kids in our dedicated kids' corner. We invite you to explore endless opportunities at Evolve 7 days a week.

create your *style*



OPEN 7 DAYS
NO APPOINTMENT NEEDED

THREE BIG BOLD WINS

2019 HIA DISPLAY HOME OF THE YEAR AND MORE

We're thrilled to have celebrated three wins at the 2019 HIA Sunshine Coast Housing Awards.

Our stunning Kensington 327 on display at Caloundra was awarded Best Display Home in its respective category as well as Display Home of the Year.

Clever and ingeniously zoned, our Felix 168 also on display at Caloundra won the Affordable Housing Award.

SMARTLIVING BY BOLD



AFFORDABLE HOME INCLUSIONS

Whether you're just starting out, a family with growing youngsters or a savvy investor, Smart Living provides a range of clever designs that combines livability and quality with affordability. We've hand picked the stylish turn-key inclusions in this collection so that all the hard work in your new Bold home is done for you, long before you move in – right down to the fine details. It couldn't be easier or more convenient. And our high standards of design and finish mean you'll be so proud to show it off.

contemporaryliving BY BOLD



INSPIRING HOME INCLUSIONS

We know you'd love your new dream home to be clean-lined, modern, comfortable and affordable. Our Contemporary Living collection is all that and more. We're proud to present a range of inspiring living environments you'd be delighted to call your own. And all complete with an extensive array of 'must have' features and fittings – high quality, forever stylish, yet budget friendly. It's all about making your home perfect for you, ensuring it's complete with the things that really matter.

SABALIVING BY BOLD



LUXURY HOME INCLUSIONS

The individual, original world of Saba Living was created for you. You have an unerring eye for what you love, what speaks to your heart and soul. When it comes to building the new home that fully expresses your dreams, your standards are unwavering. We turn the everyday event of building into a magnificent bespoke experience. Working with you to create a home that lives and breathes your individuality and ideas.

VISIT A BOLD LIVING DISPLAY CENTRE

CALOUNDRA



BURPENGARY



NEWPORT



NORTH LAKES

UPPER
KEDRON



PALLARA



SOUTH
RIPLEY



BAHRS
SCRUB

GREENBANK

UPPER
COOMERA



1800 GO BOLD

49 Flinders Pde, North Lakes Q 4509

www.boldliving.com.au

create your dream

BAHRS SCRUB

BROOKHAVEN ESTATE

BALLARAT 215
& SOPHIA 22

Menora Road
Bahrs Scrub Q 4207

CALOUNDRA

AURA ESTATE

FELIX 168
& KENSINGTON 327

Leslie Crescent
Caloundra Q 4551

BURPENGARY

NORTH HARBOUR ESTATE

ATHENA 349
& SOPHIA M 22

Brook Crescent,
Burpengary Q 4505

GREENBANK

EVERLEIGH ESTATE

SOPHIA 253
& NEWPORT 297

Olive Avenue,
Greenbank Q 4124

NEWPORT

NEWPORT 28
& ZEUS 333

Spinnaker Boulevard
Newport Q 4020

NORTH LAKES

NEWPORT 216
& STOCKHOLM 267

Attenborough Circuit
North Lakes Q 4509

PALLARA

SOPHIA 240 &
NEWMARKET 277

2 Brookbent Road
Pallara Q 4110

SOUTH RIPLEY

PROVIDENCE ESTATE

ARDANA 270, ATHENA 349,
SOPHIA M 22, STOCKHOLM 270

Soul Crescent
Ripley Q 4306

UPPER COOMERA

FORSHORE ESTATE

ELWOOD 254
KENSINGTON 367

Forresdale Street
(off Foxwell Road)
Upper Coomera Q 4209

UPPER KEDRON

ELLENDALE ESTATE

STOCKHOLM M 304

Canvey Road
Upper Kedron Q 4055